

ADVANCED OPERATIONS: HOT TANK OVERLOAD RESET

In the event of overheating inside the hot tank, a high limit reset thermostat is present to break the electrical circuit to the hot to prevent damage to the machine. If activated, this thermostat must be manually reset to return the hot tank to normal operation.

1. To access the Hot Tank, remove the lower front panel to access the lower compartment. To do this remove the two screws under the lower lip of the panel, then push down and pull out. The panel should hinge outward and be free to remove and set aside.



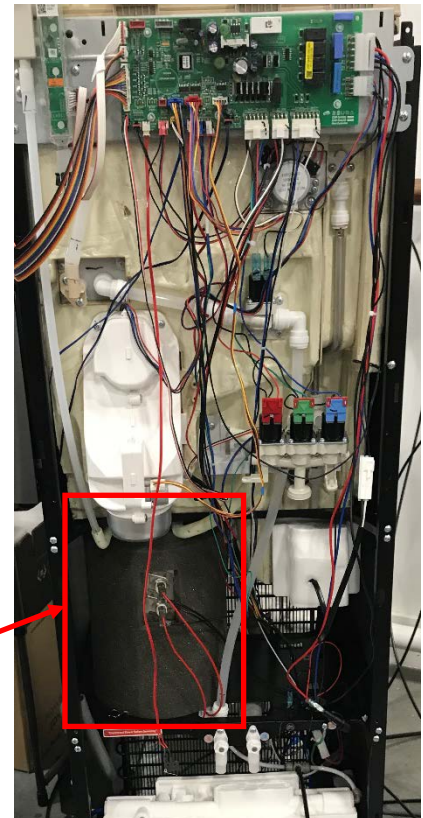
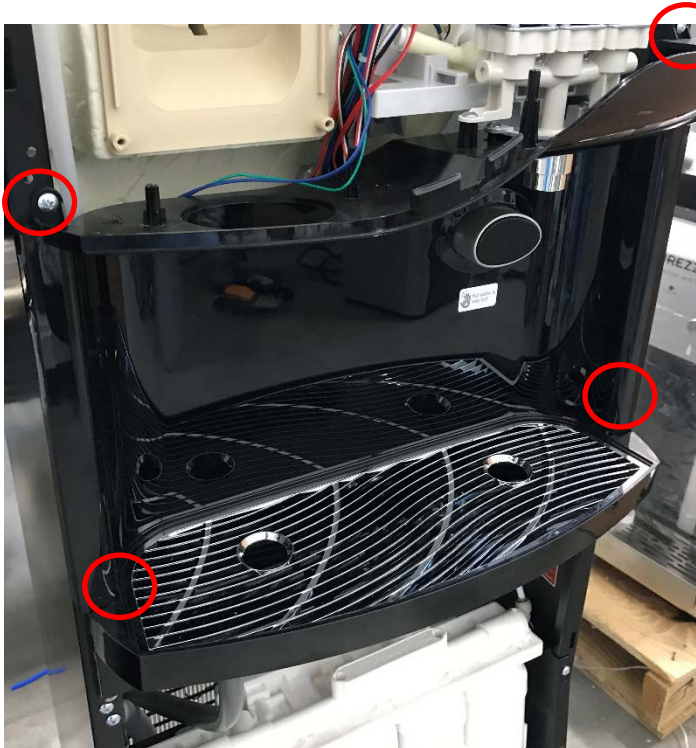
2. Remove the top cover by removing the two screws at the rear and sliding the cover back and off the unit. Then, remove the two screws holding the upper front panel in place, lift and pull away from the unit, and set aside.



3. Now, remove the silver dispensing ring mounted to the bottom of the ice chute, protruding into the dispensing area. Twist this ring 1/4 turn counterclockwise and pull down to remove. Also, turning counterclockwise, remove the dispensing nozzle to the right of the ice dispensing chute.

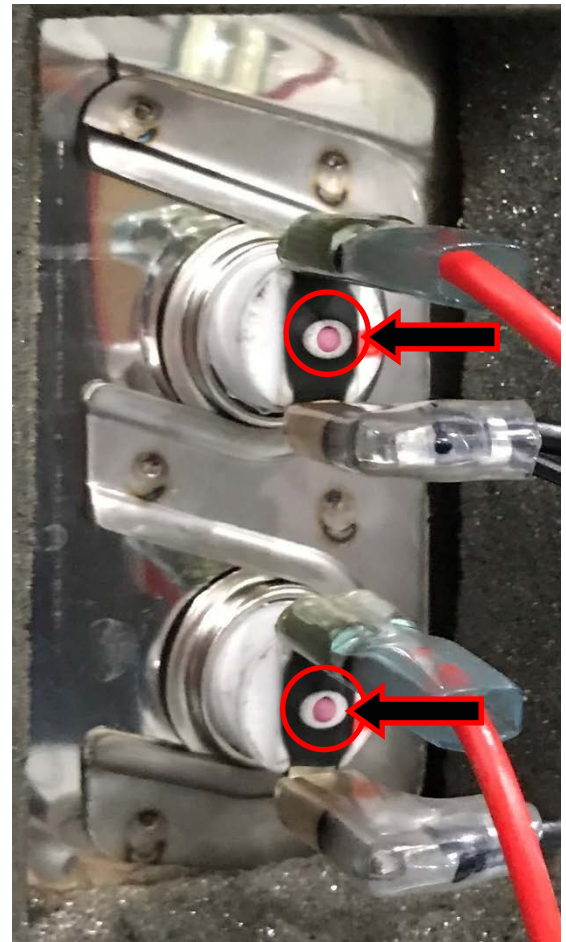
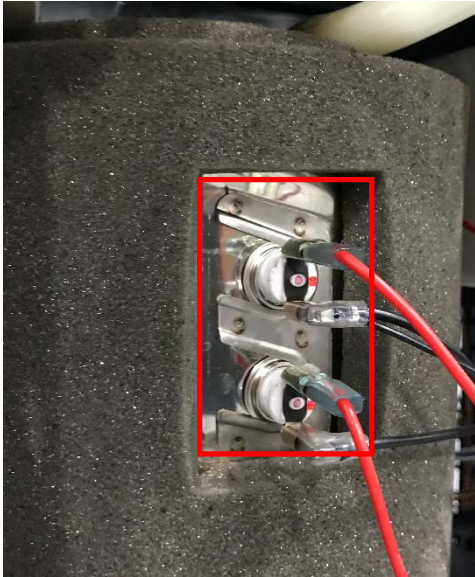


4. Now, remove the 4 screws at each corner of the dispensing cove, located at each corner of the assembly. Also remove the two screws attaching the cove to the 3-Solenoid dispensing bank. Once all have been removed, slightly lift up on the dispensing cove assembly, and pull away from the frame of the unit. Be aware, the dispensing switch is mounted to the back of the dispensing button. If necessary, trace this wire up to the PCB and disconnect. With the dispensing cove assembly removed, the hot tank is accessible.



Hot Tank

5. With the dispensing cove assembly removed, locate the Hot Tank, and notice the two-manual bi-metal thermostats installed on the face of the tank.



6. In the center of each thermostat is a small red/pink manual reset button. If one or the other has been triggered, these reset button will be prominently protruding from the thermostat. To reset, press both buttons in. An audible click MAY be heard, but usually there is no indication noise or sensation when the resets are activated. The electrical circuit for the hot tank should now be open and normal operation is possible again. Return all removed components back to their original positions to close the unit.