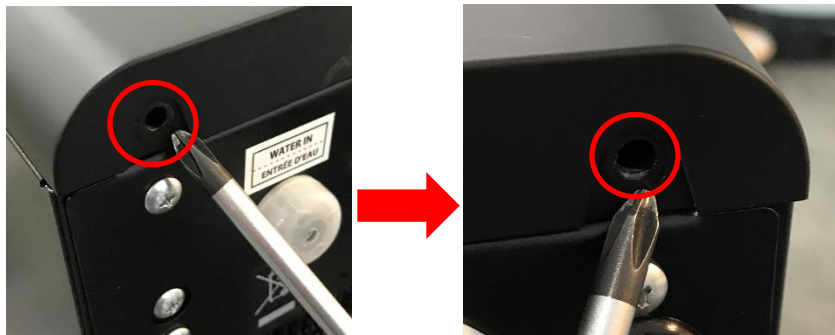


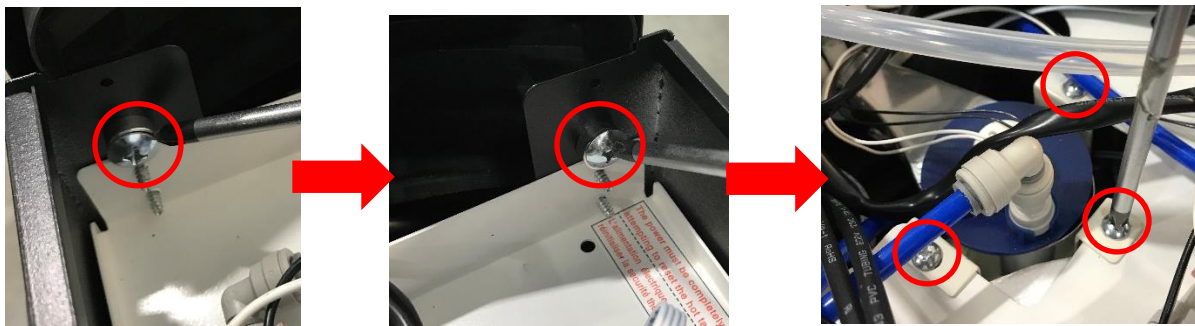
## RESETTING THE HOT TANK OVERLOAD

The **WL3 FX Water Treatment System** has a Hot Tank equipped with a High Limit or Overload Thermostat. This is to prevent damage to the unit if the temperature in the Hot Tank gets too high. If the temp does get out of control, this Overload Thermostat will break the electric connection, cutting power from the heating element. The Overload Thermostat will have to be manually reset to continue normal operation of the Hot Tank. The photos below outline how to access and reset the mechanism.

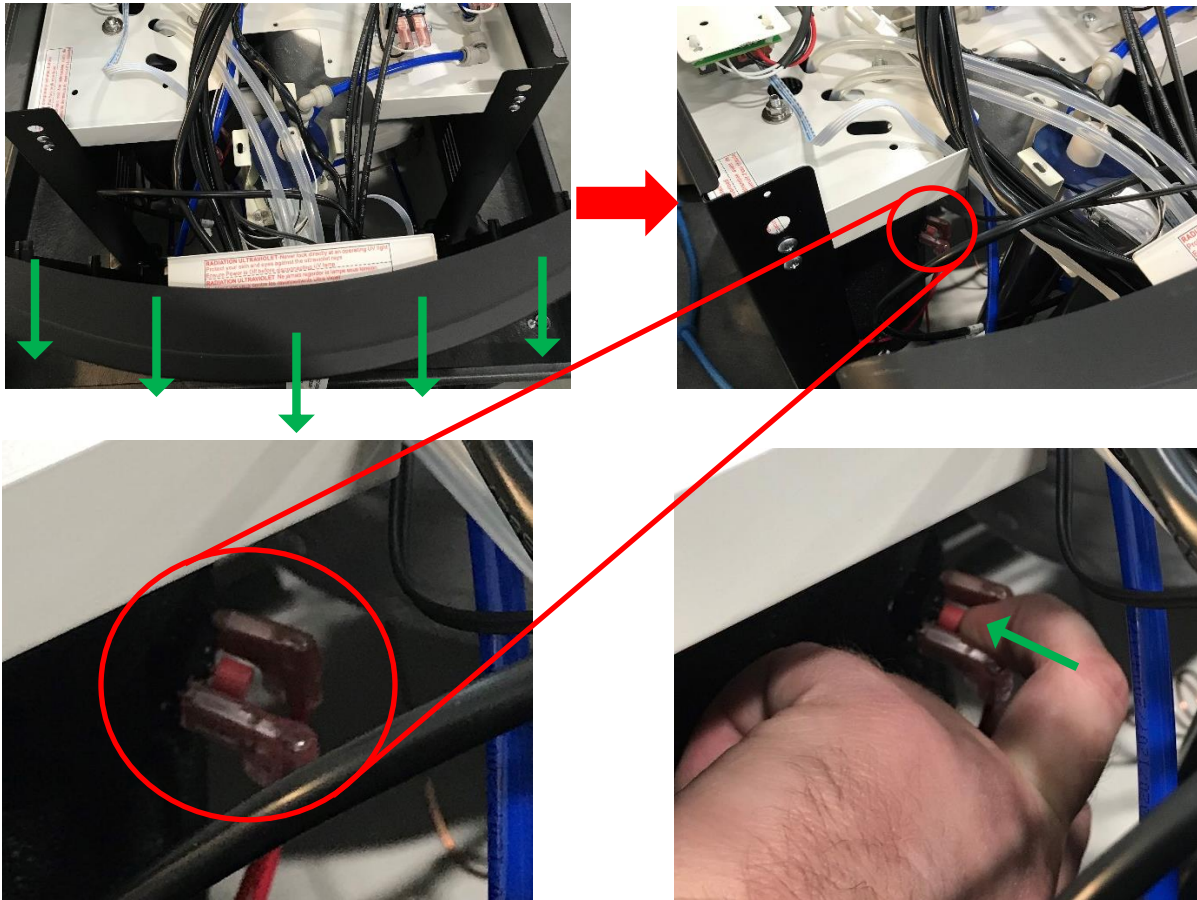
**⚠ Unplug the machine from power.** Remove the two screws at the back of the top lid and remove.



With cover removed, locate and remove the two screws on the backside of the front panel. Then locate and remove the three screws holding the Firewall in place. **Tower models will require the lower front panel be removed as well before continuing.**



Lift the Firewall assembly off the white shelf and pull the front panel away from the machine. Without disconnecting any wiring, slightly pull the panel away from the front of the machine, enough to give room to fit your hand inside the front of the machine. Locate the Overload Thermostat on the front of the Hot Tank (has a bright red button on it). Reach in and depress the red button in the center of the thermostat to manually reset the Overload Thermostat.



← CLOSE UP OF THE MANUAL OVERLOAD