

SERVICE REQUIREMENTS

⚠ WARNING! *Read and understand the contents of this manual before attempting to service WL250 Water Treatment System. Failure to follow the instructions in this manual could result in death, serious personal injury, or severe property damage. Only trained and qualified technicians should attempt to install, maintain, or service Waterlogic Equipment.*

1. Visually inspect all electrical and water connections for signs of wear or damage.

⚠ DANGER! *HIGH VOLTAGE ELECTRICAL HAZARD. Unplug before inspection and service.*

2. **Waterlogic** recommends changing the UV Lamp every 12 months.

NOTE: When replacing the UV Lamp Assembly^{*}, the UV Lamp wiring harness must also be replaced.

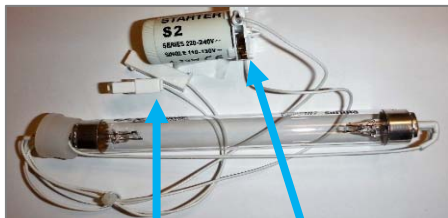
NOTE: The Glow Starter shown to the right may appear blackened which is normal.



^{*} If the WL250 Water Treatment System has an S2 Starter, it is fully interchangeable with the UV Lamp with Glow Starter.

Switching from S2 Starter to existing Glow-Starter UV Lamp Assembly Instructions

UV Lamp Assembly with S2 Starter:
Not available as a repair part

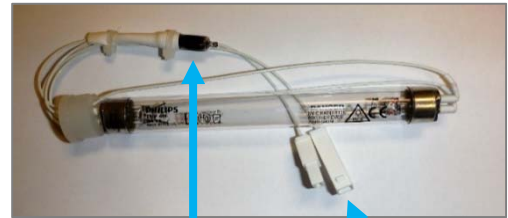


UV Lamp Connectors



S2 Starter

UV Lamp Assembly with Glow Starter Part #'s:
4-Watt Bulb 12-2350 (CT-2084)
8-Watt Bulb 10-2350 (CT-2083)



Glow Starter



UV Lamp Connectors

- A. Disconnect Lamp Male and Female Connection Clips from Ballast.
- B. Remove the S2 Starter by pulling upwards.
- C. Remove UV Lamp.

- D. Install Glow Starter UV Lamp.
- E. Connect UV Lamp Male and Female Connection Clips to Ballast.

⚠ WARNING! ULTRAVIOLET RADIATION. *Protect your skin and eyes against ultraviolet rays. Never look directly at an operating UV light. Disconnect before removing UV Lamp.*

⚠ CAUTION! UV LAMPS ARE HAZARDOUS. *Lamps are considered Hazardous Waste and must be disposed of accordingly. Refer to Product MSDS sheet for details.*

3. Clean the quartz sleeve that surrounds the UV lamp with a non-abrasive cloth, descaling solution, or ultrasonic bath if needed when changing UV lamps.

⚠ CAUTION! UV SYSTEM IS FRAGILE. *Never handle the UV lamp or Quartz Sleeve with bare hands. UV Lamp and quartz sleeve must be free of oils and contaminants to ensure proper operation. Use a soft non-abrasive cloth to clean.*

4. Inspect the Quartz Sleeve O-ring for wear or damage and replace as necessary.
5. Ensure there is adequate (minimum of 2") clearance around the **WL250 Water Treatment System** and clean the condenser grill and compressor fan to provide efficient cooling system operation.
6. Sanitize the cold tank per instructions in the pre-installation procedures.
7. Clean and sanitize external surfaces of the **WL250 Water Treatment System**. Use soap and water or chemicals that are compatible with ABS plastic and will not damage or degrade the product surfaces.
8. Remove and clean the Faucet. Replace as needed.

⚠ WARNING! SANITIZER MAY CONTAIN HAZARDOUS CHEMICALS. *Use of proper personal protective equipment such as rubber gloves and eye protection is required.*

LG COMPRESSOR UPGRADE

*Parts List in this manual updated to reflect these changes.

New LG Compressor 120V R134A 1/8HP CSB035LJCM with external start/run capacitor.

New LG Compressor with External Start/Run Capacitor



External Capacitor

New LG CSB035 LJCM Compressor

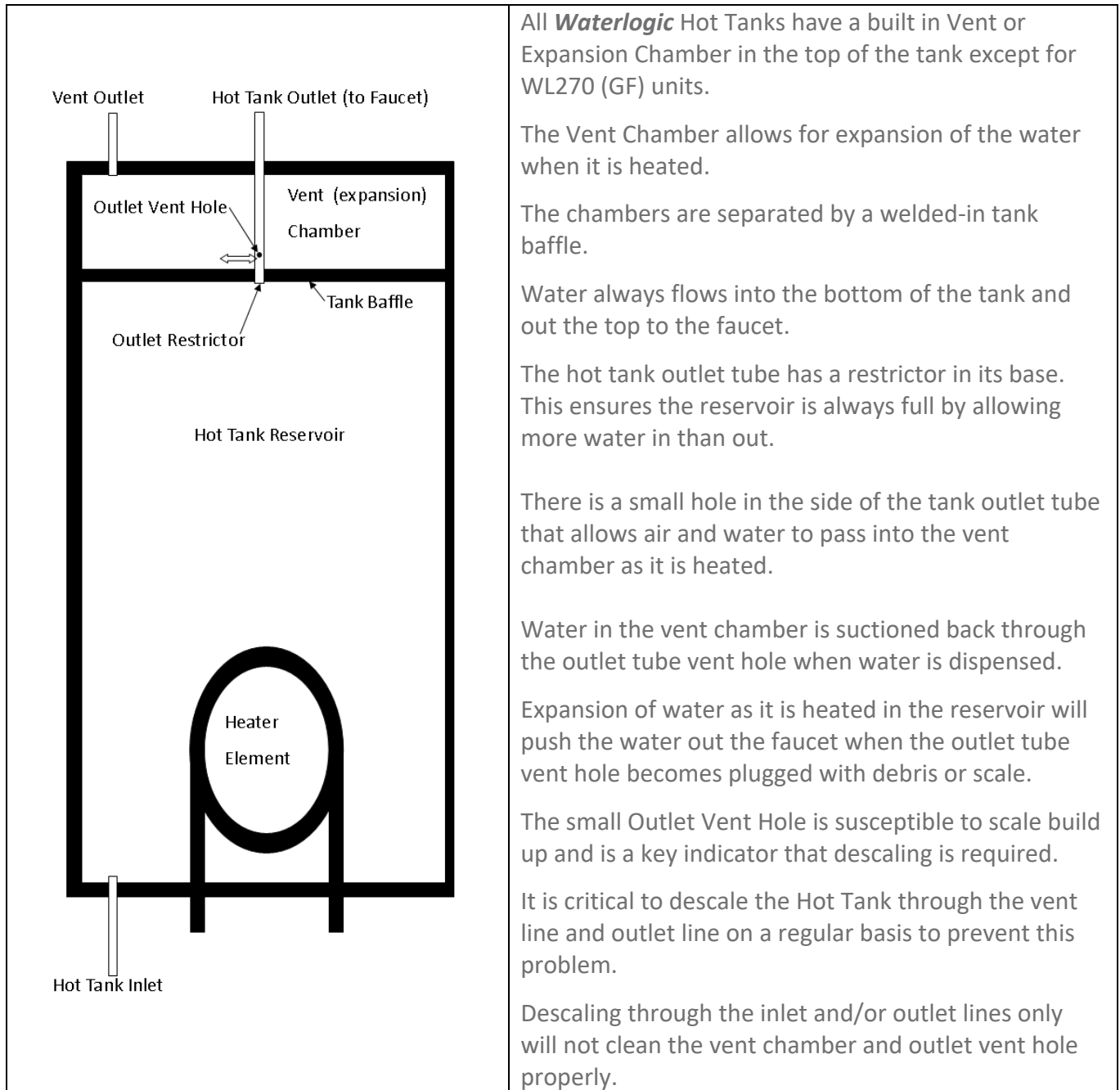
Repair/Replacement Parts for are not interchangeable with older/other compressors.

Older version of LG compressor is obsolete and no longer available.




New LG CSB035LJCM 120V R134A 1/8HP Compressor Repair Parts

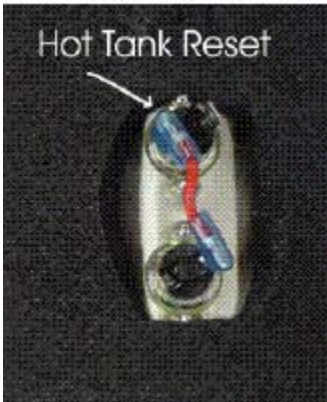

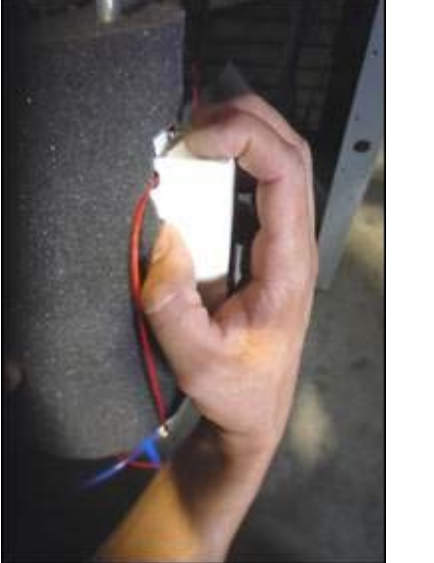
Part # CO-0017-L00-00 LG Compressor 120V CSB035LJCM-PTC Relay
 Part # CO-0018-L00-00 LG Compressor 120V CSB035LJCM-Overload Protector
 Part # CO-0019-L00-00 LG Compressor 120V CSB035LJCM-Capacitor

HOT TANK PRINCIPLES OF OPERATION



RESETTING THE HOT TANK OVERLOAD OR HIGH LIMIT SAFETY

1.	<p>Red Heater and Compressor Switch must be in the OFF position</p> <p><i>O=OFF</i></p>	
2.	<p>Unplug the Power Cord from rear of WL250 Water Treatment System.</p>	
3.	<p>Tower Model: Remove the <u>Lower Front Panel</u> by removing the Phillips Head Screws underneath the Lower Front Panel.</p> <p>Counter Top Model: Remove the <u>Side Panel</u> by removing Phillips Head Screws from Side Panel.</p>	
4.	<p>Locate the protective metal box on the rear of the Hot Tank.</p> <p>As you look through the condenser coils on the rear of the unit, you will see the Hot Tank located on the right-hand side.</p>	
5.	<p>Reach up behind the Hot Tank and take hold of the Protective Metal Box covering the Thermostat and Overload on the Hot Tank.</p> <p>There are nuts that secure the metal box to the Hot Tank. However, the nuts are loose enough to allow you to remove the metal box.</p> <p>If the nuts on the metal box are too tight, loosen the nuts securing the Hot Tank to the upper base of the unit and lower the hot tank so you can remove the metal box.</p> <p><i>For demonstrative purposes, photos below have lowered the Hot Tank from the unit.</i></p>	

6.	<p>Press the reset button</p>  <p>The image shows a small, rectangular white plastic component with two blue buttons. A white arrow points to the top button, which is labeled 'Hot Tank Reset' in white text above it.</p>	 <p>A close-up photograph showing a person's hand pressing the top blue button of the reset component into a hole in a dark grey metal housing.</p>
7.	<p>Reattach the metal box by depressing the top flap of the Metal Box so it snaps back into its original position on the Hot Tank.</p>	 <p>A close-up photograph showing a person's hand snapping a dark grey metal box back into place on the hot tank. The box has a white rectangular component attached to its side.</p>
8.	<p>Replace Panel on unit using Phillips head screws.</p>	
9.	<p>Plug in the Power Cord.</p>	
10	<p>Make sure the Hot and Cold Tanks are filled with water BEFORE turning on the Red Heater and Compressor Switch.</p> <p>Verify the cooler is fully operational before installing it at the customers' site.</p>	

HOT TANK DESCALING INSTRUCTIONS

The Hot Tank requires removal of mineral deposits (descaling) on a regular basis. Typically descaling should take place every 6 to 12 months to preserve the long-term health of your unit.

Use non-toxic cleaner such as ScaleKleen, DEZCAL, 20% Citric Acid Solution, or Undiluted Vinegar Solution to remove mineral deposits as directed by the manufacturer depending upon filtration and local water conditions.

Descaling is an important process that removes calcium deposits, or scale, that can build up inside a tank over time. Calcium and scale is non-toxic but left unattended will hinder your **WL250 Water Treatment System's** performance.


⚠️ WARNING! **PERSONAL PROTECTIVE EQUIPMENT REQUIRED.** *Always ensure proper ventilation and use rubber or nitrile gloves and eye protection when using chemicals. Refer to Material Safety Data Sheet for specific requirements of each product.*

⚠️ CAUTION! **STAINLESS STEEL TANK DESCALING.**
*The Hot Tank is made from stainless steel. Ensure descaling solution is compatible with stainless and always flush the **WL250 Water Treatment System** completely. Dispose in an environmentally safe manner.*


Materials Needed:

- Personal Protective Equipment. Rubber or Nitrile Safety Gloves and Protective Eyewear
 - Phillips Screwdriver
 - Temperature Gauge
 - Water Pitcher or Container to collect water from the faucet
 - 5-gallon container or drain basin
 - Citric Acid Based Cleaner
 - ¼" Plastic Tubing, at least 4 feet in length, and assorted ¼" quick connect fittings
 - Sanitizing Cartridge
 - Food Coloring
1. Put descaler per directions and 3 drops of food coloring into the descaling cartridge.
 2. Connect descaling cartridge to the inlet water supply and connect to inlet bulkhead fitting on the back of the **WL250 Water Treatment System**. Turn on Water Supply.
 3. Select Hot Water and depress the Main Dispensing Button on the Front Control Panel until descaling solution (colored water) comes out of the faucet. Container and drain basic will be required to catch water from the faucet.

4. Turn off water supply and remove sanitizing cartridge from inlet water supply. Reconnect water supply to inlet fitting.
5. Allow descaling solution to remain in the Hot Tank for 15 minutes (length of time may vary depending on water conditions).
6. Place a pitcher, catch basin or other container under the faucet of the **WL250 Water Treatment System**.
7. Flush the Hot Tank until water runs clear.
8. Once clear Water dispenses from the faucet the Hot Tank has been descaled. Always ensure the **WL250 Water Treatment System** is performing to the customer's satisfaction.

 **WARNING! HOT WATER HAZARD.** The **WL250 Water Treatment System** Produces Hot Water and Steam. Always use insulated and chemically compatible containers and let **WL250 Water Treatment System** cool down before draining the hot tank to avoid injury.

 **CAUTION! MUST REPLACE HOT TANK EVERY 3-5 YEARS DEPENDING ON USAGE**
The Hot Tank and its controls must be replaced a minimum of every three to five years depending on usage to ensure efficient and dependable operation.

 **WARNING! REINSTALL ALL PANELS AND COVERS.** Always reinstall all Panels, protective covers, and fasteners after servicing equipment. Failure to do so could result in severe personal injury and will void the certifications and warranty of the equipment.

REPLACEMENT COMPONENTS (CONSUMABLES)

Component	WLCP Part No.	Frequency of Replacement
UV Light, 4 Watts Assembly Counter Top	12-2350	Every 12 months, or as required CT-2030-I00-00
UV Light, 8 Watts Assembly Tower	10-2350	Every 12 months, or as required CT-2001-I00-00
Hot Tank 1.6 Liter (.42 Gallons) 87°C (189°F) - Counter Top	12-1406	Replace every 3-5 years depending on usage HT-3018-A
Hot Tank 1.6 Liter (.42 Gallons) 87°C (189°F) - Tower	12-1405	Replace every 3-5 years depending on usage HT-3018
GAC Filter - 10" Carbon Activated Inline Filter – <i>Optional</i> <i>*Filter Element PN FT-0038-WLT</i>	FT-0035	Every 6-months or as required. Local water conditions will determine proper filter type and maintenance schedule. FT-0035-IL-WLT
Carbon Block - 10" CBC 1 Micron Lead and Cyst Reduction Inline Filter – <i>Optional</i> <i>*Filter Element PN FT-0064-WLT</i>	FT-0063	Every 6-months or as required. Local water conditions will determine proper filter type and maintenance schedule. FT-0063-IL-WLT
Sediment Filter - 10" Sediment 20 Micron Inline Filter – <i>Optional</i> <i>*Filter Element PN FT-0055-WLT</i>	FT-0053	Every 6-months or as required. Local water conditions will determine proper filter type and maintenance schedule. FT-0053-IL-WLT

⚠ CAUTION! Use only Waterlogic Replacement parts that can be obtained from *Waterlogic* or an *Authorized Waterlogic Dealer*, failure to do so will void the Warranty.

See Installation and Service Manual for additional information.

Hot Tank Service

Hot Tanks (with controls) must be replaced at least every 3-5 years depending on usage. Descaling hot tank may be required on a regular basis depending upon filtration and local water conditions. See Installation and Service Manual for further details.

Surface Cleaning

Clean on a regular basis with damp lint free cloth. Never use harsh chemicals (alcohol or acid based) or abrasive agents on any part of the product to avoid damage. A mild cleaner such as Simple Green or equivalent is recommended.

DISPOSAL

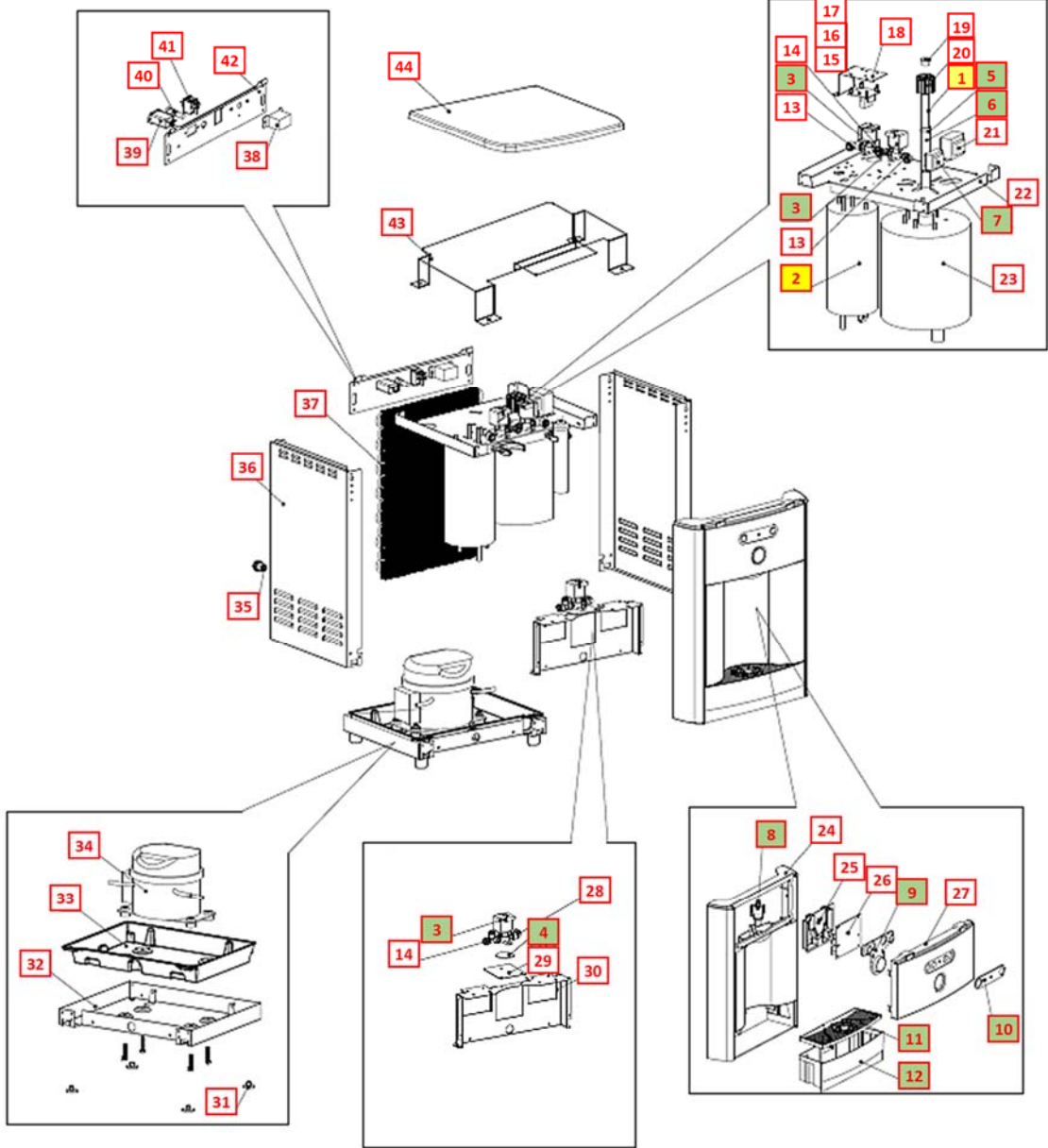
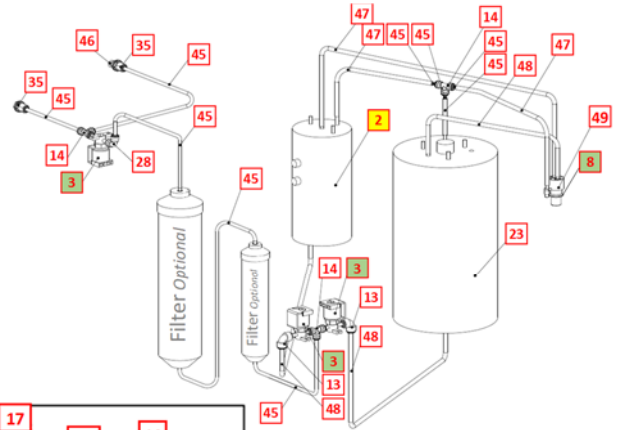
End of Life

At the **end of this product's life**, ensure that it is disposed of in an environmentally friendly manner which is fully compliant **with all Federal/State/Local Requirements and Guidelines**. Do not dispose of this appliance with normal household or business waste.

WL250 COUNTER TOP DRAWING AND PARTS LIST

Yellow = Consumables
Green = Recommended spare parts

Wetted Drawing



No	WLCP Part No.	Description	Part No	Stocked?	
Consumables					
1	12-2350	4W Lamp Assembly with Glow Starter	CT-2030-I00-00	Yes	
2	12-1406	Hot Tank 1.6 Liter (.42 Gallons) 87°C (189°F) – Counter Top	HT-3018-A	Yes	
Optional	FT-0035	GAC Filter - 10" Carbon Activated Inline Filter - Optional <i>Filter Element PN FT-0038-WLT</i>	FT-0035-IL-WLT	Yes	
Optional	FT-0063	Carbon Block - 10" CBC 1-Micron Lead and Cyst Reduction Inline Filter Optional <i>Filter Element PN FT-0064-WLT</i>	FT-0063-IL-WLT	Yes	
Optional	FT-0053	Sediment Filter - 10" Sediment 20 Micron Inline Filter Optional <i>Filter Element PN FT-0055-WLT</i>	FT-0053-IL-WLT	Yes	
Recommended Spare Parts					
2.1	EL-0159-L00-00	Overload with Manual Reset - 97°C (206°F) <i>Recommend stocking 2 each per every 10 units purchased</i>	EL-0159-L00-00	Yes	
2.2	EL-0035-L00-00	Hot Tank Thermostat - 85°C (185°F) <i>Recommend stocking 2 each per every 10 units purchased</i>	EL-0035-L00-00	Yes	
2.3	12-6900	Thermostat and Overload Metal Cover <i>Recommend stocking 2 each per every 10 units purchased</i>	ST-8290	Yes	
3	12-1500	Solenoid Valve 500 mm <i>Recommend stocking 2 each per every 10 units purchased</i>	PU-4016	Yes	
4	CU-0001	Solenoid Cushion <i>Recommend stocking 2 each per every 10 units purchased</i>	CU-0001	Yes	



5	10-2500	Black O-Ring for Quartz Sleeve <i>Recommend stocking 1 each per every 10 units purchased</i>	CT-2006	Yes	
6	14-1051	Quartz Sleeve for 4W Lamp <i>Recommend stocking 1 each per every 10 units purchased</i>	CT-2026	Yes	
7	EN-0068-L00-00	UV Lamp Ballast 120V 60Hz 4W	EN-0068-L00-00	Yes	
8	10-3048	Faucet Nipple – Blue with Screen <i>Recommend stocking 2 each per every 10 units purchased</i>	PL-1013	Yes	
8.1	10-2600	Natural Faucet O-Ring – Silicon White <i>Recommend stocking 2 each per every 10 units purchased</i>	CT-2007	Yes	
9	12-8056	Silicon Button Key Mat <i>Recommend stocking 5 each per every 10 units purchased</i>	PL-1153	Yes	
10	12-8057	Button Label <i>Recommend stocking 2 each per every 10 units purchased</i>	LP-7084	Yes	
11	12-8150	Drip Tray Grill – Charcoal <i>Recommend stocking 4 each per every 10 units purchased</i>	PL-1152	Yes	
12	12-8055	Drip Tray - Charcoal with Waterlogic Logo <i>Recommend stocking 4 each per every 10 units purchased</i>	PL-1156	Yes	
Not Shown	01-2076	ScaleKleen <i>Recommend stocking 2 each per every 10 units purchased</i>	NA	Yes	
Remaining Parts					
13	Purchase from John Guest	JG Reducing Elbow Connector 5/16" * 1/4" (P1211008S)	PU-4007	No	
14	Purchase from John Guest	JG Equal Tee Connector 1/4" (P10208S)	PU-4011	No	

15	12-8510	UV 3-minute Timer PCB Hot and Cold	AK-0008-A	Yes	
16	EN-6059-A	PCB Stand-off Pin (one side)	NA	No	
17	10-3017	PCB Stand-off Pin	EN-6059	Yes	
18	NA	UV 3-minute Timer PCB Fixing Bracket	ST-8287	No	
19	PL-0235-L00-00	4W UV Fixing Rubber <i>Included in CT-2030-100-00 4 W Lamp Assembly</i>	PL-0235-L00-00	Yes	
20	12-1210	UV Lamp Retaining Threaded Nut	PL-1128	Yes	
21	12-3117	Power Transformer 120V	EL-5003-A	Yes	
22	12-3165	Upper Shelf	ST-8150	Yes	
23	12-3110	2L UV Cold Tank Assembly	CT-2060	Yes	
24	12-8050	Front Upper Drip Tray Insert Panel – <i>when purchasing, also request Hot Water Caution Label LP-7169 / 12-0001 to adhere to front of this panel.</i>	PL-1146	Yes	
24.1	12-0001	Hot Water Caution Label – <i>adhere to Front Upper Drip Tray Insert Panel.</i>	LP-7169	Yes	

25	12-3160	PCB Cover	PL-1298	Yes	
26	12-3115	PCB for Leak Detection System Hot and Cold	EN-6085-A	Yes	
27	12-8051	Front Hatch Panel Charcoal with UV logo <i>Sold Separately: Button Label (P/N 12-8057) & Silicon Button Key Mat (P/N 12-8056)</i>	PL-1147-B	Yes	
28	Purchase from John Guest	JG Equal Elbow Connector 1/4" (PI0308S)	PU-4008	No	
29	12-3195	Leak System Inlet Solenoid Bracket	ST-8244	Yes	
30	12-3175	Filter Bracket	ST-8152	Yes	
31	12-3150	Unit Rubber Feet	PL-1251-CN	Yes	
32	12-3170	Bottom Tray	ST-8151	Yes	
33	12-3155	Leak Tray	PL-1294	Yes	
33.1	12-3180	Leak Containment Tray Clip (sensor 0.5mm)	ST-8207-CN	Yes	
33.2	NA	Leak Sensor Wire	EL-5076-KR	No	

Verify compressor in machine before ordering parts as the Compressor P/N CO-0020-L00-00 and 10-2200 (CO-0001A) and related parts are not interchangeable.

CO-0020-L00-00 Compressor

34A.1	CO-0020-L00-00	LG Compressor 120V R134A CSB035LJCM	CO-0020-L00-00	Yes	
34A.2	CO-0019-L00-00	Compressor Capacitor	CO-0019-L00-00	Yes	
34A.3	ST-0216-L00-00	Capacitor Bracket	ST-0216-L00-00	Yes	
34A.4	CO-0017-L00-00	PTC Relay	CO-0017-L00-00	Yes	
34A.5	CO-0018-L00-00	Overload Protector	CO-0018-L00-00	Yes	

CO-9001-A / 10-2200 Compressor

34B.1	10-2200	Compressor (R134a 1/8HP) 120V/60Hz	CO-9001-A	Yes	
34B.2	10-3003	Compressor Starter Relay	CO-9016	Yes	
34B.3	10-5018	Compressor Overload	CO-9015	Yes	
34.1	12-1001	Filter Dryer	CO-9008	Yes	
35	10-3067	Bulkhead Union 1/4" x 1/4" John Guest P/N PI1208S	PU-4028	Yes	
36	12-8062	Side Panel	ST-8245	Yes	
37	12-3100	Wire Condenser	CO-9031	Special Order	

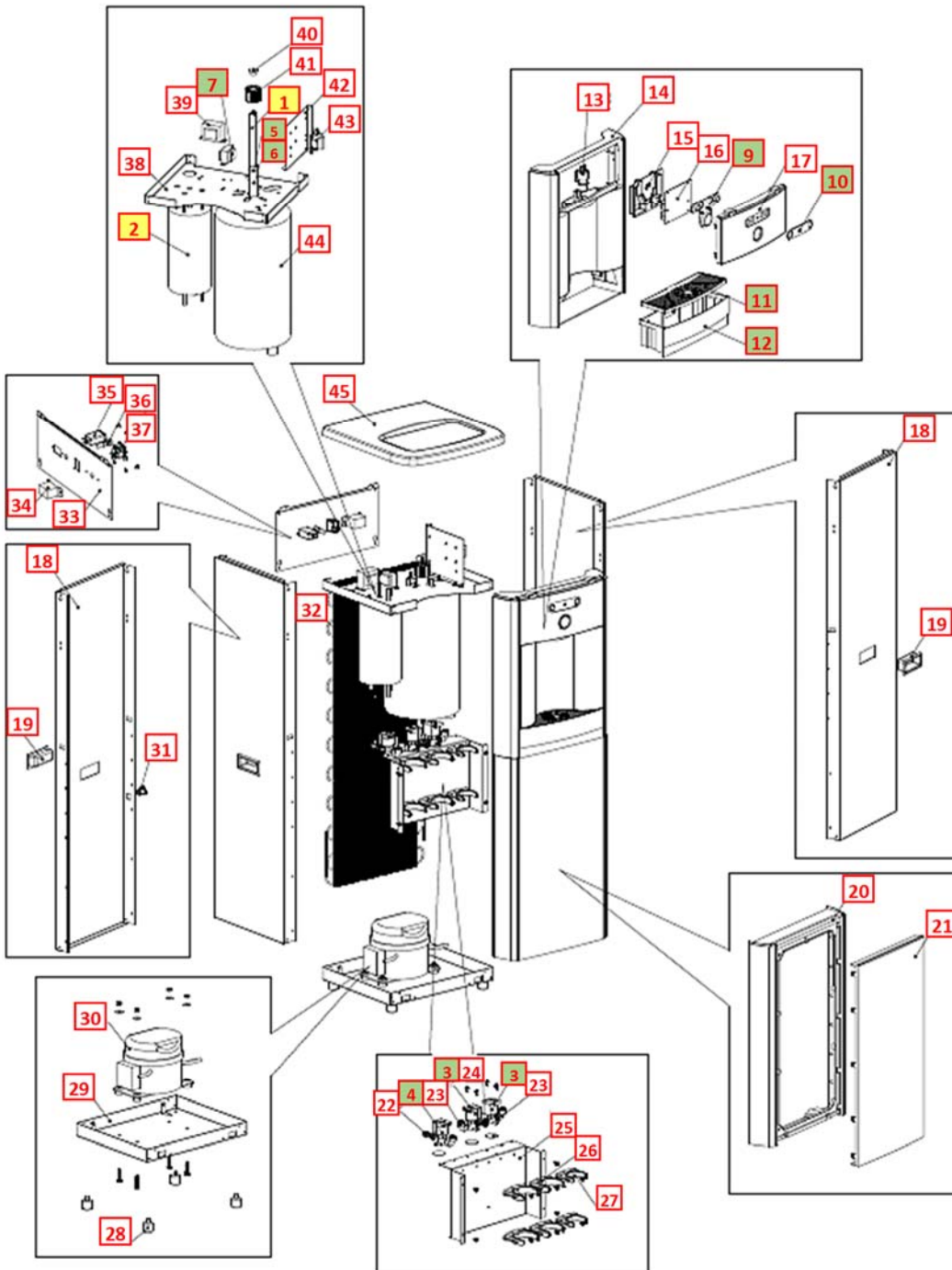
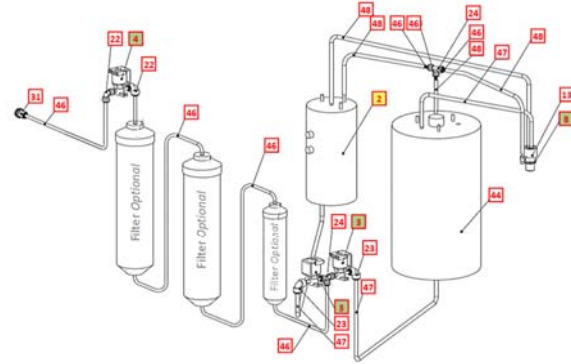
38	12-1101	Cold Tank Thermostat	CT-2016	Yes	
38.1	LP-0326	Cold Thermostat Cover Label	LP-0326-L00-00	Yes	
39	10-4013	Power Line Noise Filter, ElectroMagnetic Interference filter (EMI)	EL-5016	Yes	
40	10-3014	Fuse Holder and Fuse 120V / 15A with One Wire	EL-5053	Yes	
40.1	10-3013	Fuse 120V / 15A	EL-5010	Yes	
41	10-3008	Red Compressor and Heater Switch	EL-5004	Yes	
42	12-8061	Silver Back Panel	ST-8216	Yes	
43	ST-0049- L00-00	Metal Cover (Under Top Cover)	ST-0049-L00-00	Yes	
44	12-8060	Flat Top Cover - Charcoal with Texture	PL-1249-CN	Yes	
45	Purchase from John Guest	JG LLD PE Tube - Blue O.D.1/4"John Guest P/N PE-08- BI-1000F-B	PU-4031	No	
46	Purchase from John Guest	JG 1/4" Stopper PI0808S (used with Bulkhead Union 1/4" x 1/4" John Guest P/N PI1208S)	PU-4086	No	
47	10-7040	Silicon Tube 5/16" for Hot Water	PU-4064	Yes	

48	10-3062	JG LLDPE Tube - Blue 8mm John Guest P/N PE-0806- 100M-B	PU-4014	Yes	
49	10-2700	Faucet Assembly	PL-1011	Yes	
Not Shown	10-3099	3" Filter Clip	PU-4024	Yes	
Not Shown	10-3098	2" Filter Clip for In-Line Filter	PU-4025	Yes	
Not Shown	10-3007	Power Cord 120V – 1840 mm	EL-5001-B	Yes	

WL250 TOWER DRAWING AND PARTS LIST

Wetted Drawing

Yellow = Consumables
Green = Recommended spare parts





No	WLCP Part No.	Description	Part No	Cold Only	Hot & Cold	Stocked?	
Consumables							
1	10-2350	8W UV Lamp Assembly with Glow starter	CT-2001-100-00	X	X	Yes	
2	12-1405	Hot Tank Stainless Steel 1.6 Liter (87°C - 189°F)	HT-3018		X	Yes	
3	FT-0035	GAC Filter - 10" Carbon Activated Inline Filter - Optional <i>Filter Element PN FT-0038-WLT</i>	FT-0035-IL-WLT	X	X	Yes	
4	FT-0063	Carbon Block - 10" CBC 1-Micron Lead and Cyst Reduction Inline Filter Optional <i>Filter Element PN FT-0064-WLT</i>	FT-0063-IL-WLT	X	X	Yes	
5	FT-0053	Sediment Filter - 10" Sediment 20 Micron Inline Filter Optional <i>Filter Element PN FT-0055-WLT</i>	FT-0053-IL-WLT	X	X	Yes	
Recommended Spare Parts							
2.1	EL-0159-L00-00	Overload with Manual Reset - 97°C (206°F) <i>Recommend stocking 2 each per every 10 units purchased</i>	HT-3012		X	Yes	
2.2	EL-0035-L00-00	Hot Tank Thermostat - 85°C (185°F) <i>Recommend stocking 2 each per every 10 units purchased</i>	HT-3013A		X	Yes	
2.3	12-6900	Hot Tank Supplemental Steel Enclosure <i>Recommend stocking 2 each per every 10 units ordered</i>	ST-8290		X	Yes	
3	12-1500	Solenoid Valve 1000 mm <i>Recommend stocking 2 each per every 10 units purchased</i>	PU-4016	X	X	Yes	

3.1	CU-0001	Solenoid Cushion <i>Recommend stocking 2 each per every 10 units purchased</i>	CU-0001	X	X	Yes	
4	PU-4164	Solenoid Valve 24 DC Single Spring Load <i>Recommend stocking 1 each per every 10 units purchased</i>	PU-4164		X	Yes	
5	10-2500	Black O-Ring for Quartz Sleeve <i>Recommend stocking 1 each per every 10 units ordered</i>	CT-2006	X	X	Yes	
6	10-1400	Quartz Sleeve for 8W Lamp <i>Recommend stocking 1 each per every 10 units ordered</i>	CT-2002	X	X	Yes	
7	10-3010	UV Lamp Ballast 120V 60Hz 8W	EL-5006-A CN	X	X	Yes	
8	10-3048	Blue Faucet Nipple, with Stainless Steel Gauze <i>Recommend stocking 2 each per every 10 units ordered</i>	PL-1013	X	X	Yes	
8.1	10-2600	White Silicon Faucet O-Ring <i>Recommend stocking 2 each per every 10 units ordered</i>	CT-2007	X	X	Yes	
9	12-8056	Silicon Button Key Mat <i>Hot and Cold</i> <i>Recommend stocking 5 each per every 10 units ordered</i>	PL-1153		X	Yes	
	12-8600	Silicon Button Key Mat <i>Cold only</i> <i>Recommend stocking 5 each per every 10 units ordered</i>	PL-1100	X		Yes	
10	12-8057	Button Label <i>Hot and Cold</i> <i>Recommend stocking 2 each per every 10 units ordered</i>	LP-7084		X	Yes	
	12-8610	Button Label <i>Cold Only</i> <i>Recommend stocking 2 each per every 10 units ordered</i>	LP-7085	X		Yes	



11	12-8150	Drip Tray Grill <i>Recommend stocking 4 each per every 10 units ordered</i>	PL-1152	X	X	Yes	
12	12-8055	Drip Tray Body with Waterlogic Logo <i>Recommend stocking 4 each per every 10 units ordered</i>	PL-1156	X	X	Yes	
Not Shown	01-2076	ScaleKleen <i>Recommend stocking 5 each per every 10 units ordered</i>	NA	X	X	Yes	
Remaining Parts							
13	10-2700	Faucet Assembly – Hot and Cold	PL-1011		X	Yes	
	NA	Faucet <i>Cold Only</i>	PL-1012	X		Yes	
14	12-8050	Front Panel for Drip Tray Insert <i>when purchasing, also request Hot Water Caution Label LP-7169 / 12-0001 to adhere to front of this panel.</i>	PL-1146	X	X	Yes	
14.1	12-0001	Hot Water Caution Label Adhere to Front Panel for Drip Tray Insert	LP-7169		X	Yes	
15	12-3160	PCB Cover	PL-1298	X	X	Yes	
16	12-3115	PCB for Leak Detection Hot and Cold	EN-6085-A		X	Yes	
	12-8615	PCB for Cold Water	EN-6086	X		Yes	

17	12-8051	Front Upper Panel * <i>Sold Separately:</i> <i>Silicon Button Key Mat</i> <i>P/N 12-8600 Cold Only</i> <i>Button Label:</i> <i>P/N 12-8056 Hot and Cold;</i> <i>P/N 12-8610 Cold Only.</i>	PL-1147-B	X	X	Yes	
18	12-8000	Silver Side Panel with Hole for Handle	ST-8157	X	X	Yes	
19	12-8058	Side Panel Plastic Handle	PL-1123	X	X	Yes	
20	12-8052	Front Lower Panel	PL-1148	X	X	Yes	
21	12-8053	Front Lower Insert Panel	PL-1149	X	X	Yes	
22	Purchase from John Guest	JG Equal Elbow Connector 1/4"	PU-4008	X	X	No	
23	Purchase from John Guest	JG Reducing Elbow Connector 5/16" * 1/4"	PU-4007	X	X	No	
24	Purchase from John Guest	JG Equal Tee Connector 1/4"	PU-4011	X	X	No	
25	12-8003	Filter Bracket	ST-8138	X	X	Yes	
26	10-3099	3" Filter Clip	PU-4024	X	X	Yes	
27	10-3098	2" Filter Clip for In-Line Filter	PU-4025	X	X	Yes	





28	10-3083	Unit Control Rubber Feet	ST-8167CN	X	X	Yes	
29	12-8004	Bottom Tray	ST-8137	X	X	Yes	

Verify compressor in machine before ordering parts as the Compressor P/N CO-0020-L00-00 and 10-2200 (CO-0001A) and related parts are not interchangeable.

CO-0020-L00-00 LG Compressor

30A.1	CO-0020-L00-00	LG Compressor 120V R134A CSB035LJCM	CO-0020-L00-00	X	X	Yes	
30A.2	CO-0019-L00-00	Compressor Capacitor	CO-0019-L00-00	X	X	Yes	
30A.3	ST-0216-L00-00	Capacitor Bracket	ST-0216-L00-00	X	X	Yes	
30A.4	CO-0017-L00-00	PTC Relay	CO-0017-L00-00	X	X	Yes	
30A.5	CO-0018-L00-00	Overload Protector	CO-0018-L00-00	X	X	Yes	

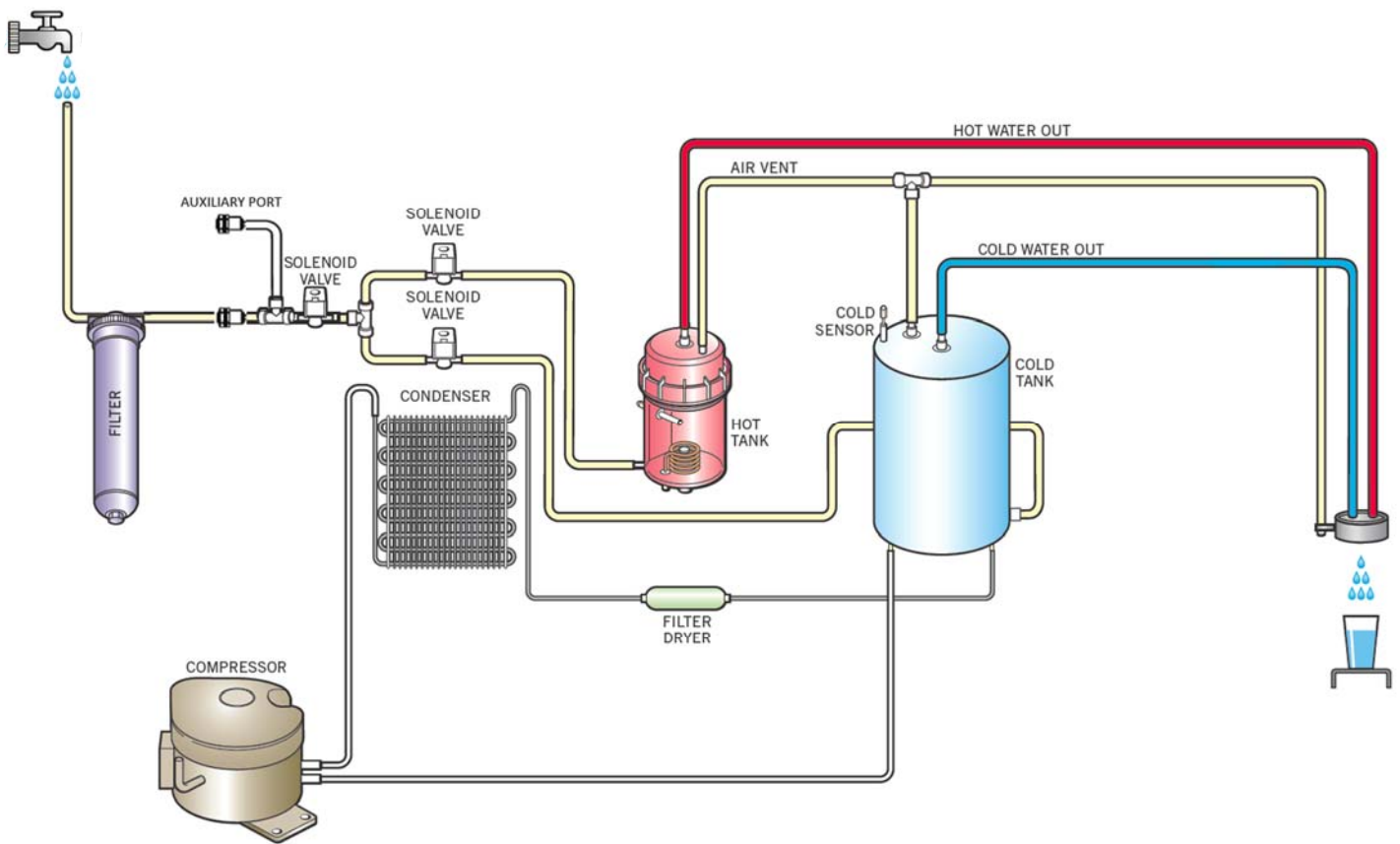
CO-9001-A / 10-2200 Compressor

30B.1	10-2200	Compressor (R134a 1/8HP) 110V/60Hz	CO-9001-A	X	X	Yes	
30B.2	10-3003	Compressor Starter Relay	CO-9016	X	X	Yes	
30B.3	10-5018	Compressor Overload	CO-9015	X	X	Yes	
30.1	12-1001	Filter Dryer	CO-9008	X	X	Yes	

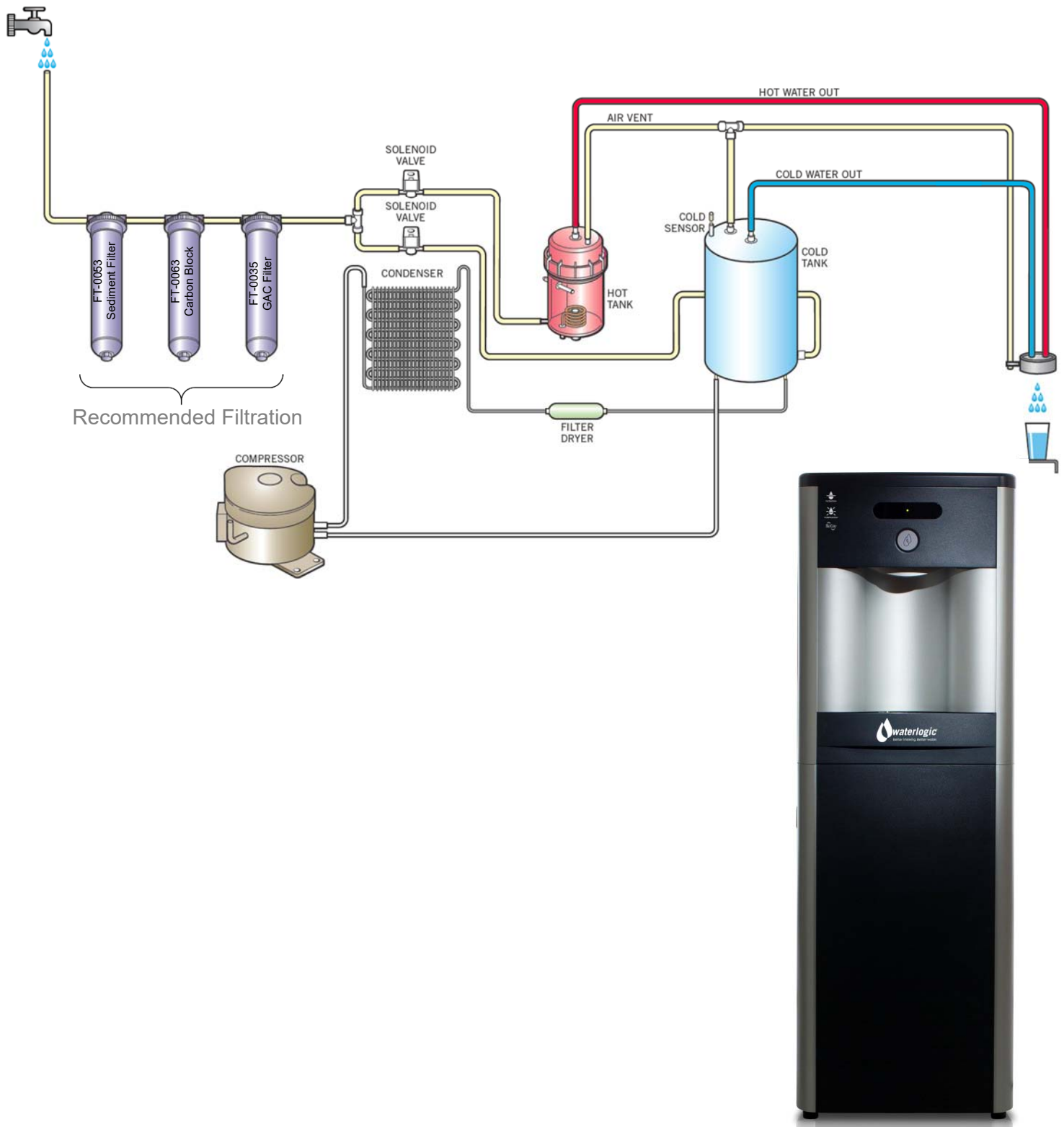
31	10-3067	Bulkhead Union ¼" x ¼" John Guest P/N PI1208S	PU-4028	X	X	Yes	
32	12-8102	Wire Condenser	CO-9027	X	X	Special Order	
33	12-8002	Back Panel Silver	ST-8135	X	X	No	
34	12-1101	Cold Tank Thermostat	CT-2016	X	X	Yes	
34.1	LP-0326	Cold Thermostat Cover Label	PL-0326-L00-00	X	X	Yes	
35	10-4013	Power Line Noise Filter, ElectroMagnetic Interference filter (EMI)	EL-5016	X	X	Yes	
36	10-3014	Fuse Holder and Fuse 120V / 15A with One Wire	EL-5053	X	X	Yes	
36.1	10-3013	Fuse 120V / 15A	EL-5010	X	X	Yes	
37	10-3008	Red Compressor and Heater Switch	EL-5004	X	X	Yes	
38	12-8003	Upper Shelf	ST-8136-R2	X	X	Yes	
39	12-3117	Power Transformer 120V	EL-5003-A	X	X	Yes	
40	PL-0235-L00-00	4W UV Fixing Rubber <i>Included in UV Lamp Assembly</i>	PL-0235-L00-00	X	X	Yes	
41	12-1210	UV Lamp Retaining Threaded Nut	PL-1128	X	X	Yes	

42	12-5245	Main PCB Bracket	ST-8165-CN	X	X	Yes	
43	12-8510	3 Minute UV Timer PCB Hot and Cold	AK-0008-A		X	Yes	
	12-8520	3 Minute UV Timer PCB Cold Only	AK-0008-C	X		Yes	
43.1	10-3017	PCB Stand-off Pin	EN-6059	X	X	Yes	
44	NA	Cold Tank 4 Liter Assembly with UV Holder	CT-2050	X	X	No	
45	12-8054	Top Cover – Charcoal	PL-1150	X	X	Yes	
46	10-3062	JG LLDPE Tube - Blue 8mm John Guest P/N PE-0806-100M-B	PU-4014	X	X	Yes	
47	NA	JG LLD PE Tube - Blue O.D.1/4" John Guest P/N PE-08-BI-1000F-B	PU-4031	X	X	Purchase from John Guest	
48	10-7040	Silicon Tube 5/16" for Hot Water	PU-4064		X	Yes	
Not Shown	10-3007	Power Cord 120V – 1840 mm	EL-5001-B	X	X	Yes	

WL250 COUNTER TOP WATER FLOW DIAGRAM



WL250 TOWER WATER FLOW DIAGRAM



ADJUSTING COLD SET POINT

Cold Water Temperature – Factory Set Point is 41°F (5°C) and can be adjusted to 34°F - 54°F (1.1°C to 12.2°C)

The cold set point can be adjusted by accessing the cold thermostat adjustment screw under the decal at the rear of the unit.



Remove the red portion of the Cold Tank Temperature label to access the adjustment screw.

The factory set point is ~41°F and is indicated by the dot on sheet metal.



Turning the adjustment screw clockwise to lower the set point temperature.

Do not adjust past the “Max Cold” position at 3:00 position to avoid freezing the cold tank.



Turning the adjustment screw counter-clockwise to raise the set point temperature.

WL250 WATER TREATMENT SYSTEM ELECTRICAL DIAGRAM

⚠ DANGER! HIGH VOLTAGE ELECTRICAL HAZARD. PCB (Printed Circuit Board) contains High Voltage. Only trained and qualified technicians should attempt live testing.

