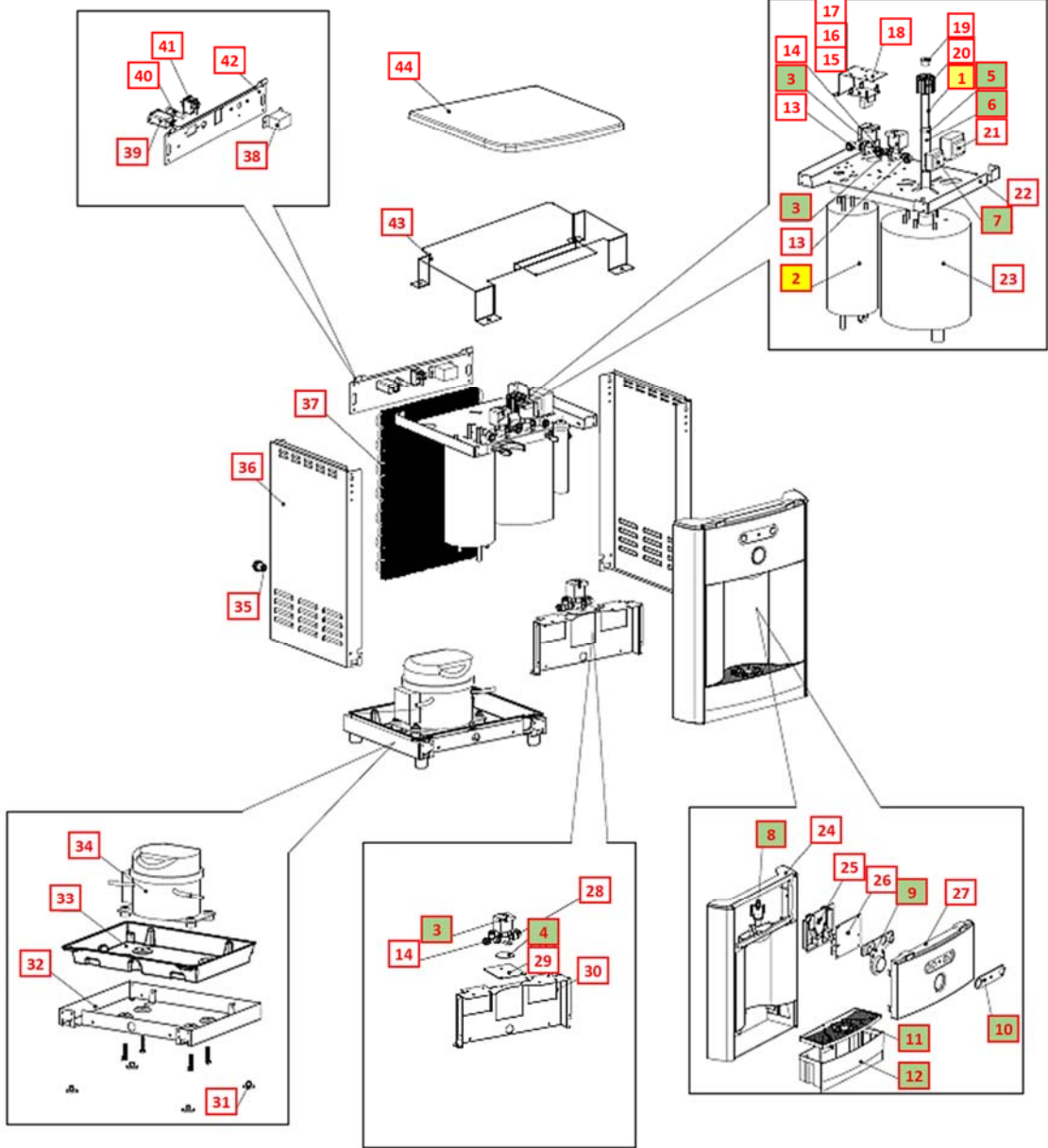
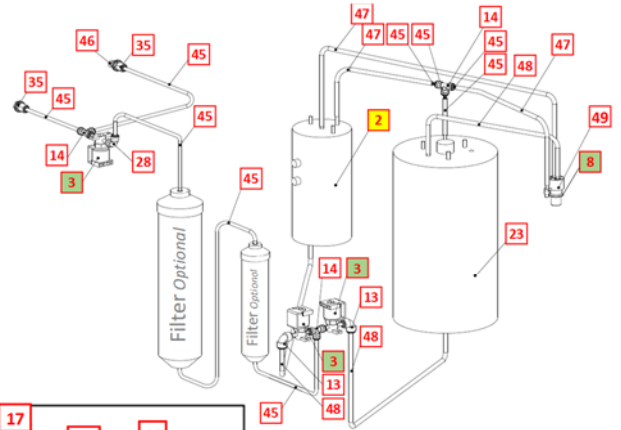


WL250 COUNTER TOP DRAWING AND PARTS LIST

Yellow = Consumables
 Green = Recommended spare parts

Wetted Drawing



No	WLCP Part No.	Description	Part No	Stocked?	
Consumables					
1	12-2350	4W Lamp Assembly with Glow Starter	CT-2030-I00-00	Yes	
2	12-1406	Hot Tank 1.6 Liter (.42 Gallons) 87°C (189°F) – Counter Top	HT-3018-A	Yes	
Optional	FT-0035	GAC Filter - 10" Carbon Activated Inline Filter - Optional <i>Filter Element PN FT-0038-WLT</i>	FT-0035-IL-WLT	Yes	
Optional	FT-0063	Carbon Block - 10" CBC 1-Micron Lead and Cyst Reduction Inline Filter Optional <i>Filter Element PN FT-0064-WLT</i>	FT-0063-IL-WLT	Yes	
Optional	FT-0053	Sediment Filter - 10" Sediment 20 Micron Inline Filter Optional <i>Filter Element PN FT-0055-WLT</i>	FT-0053-IL-WLT	Yes	
Recommended Spare Parts					
2.1	EL-0159-L00-00	Overload with Manual Reset - 97°C (206°F) <i>Recommend stocking 2 each per every 10 units purchased</i>	EL-0159-L00-00	Yes	
2.2	EL-0035-L00-00	Hot Tank Thermostat - 85°C (185°F) <i>Recommend stocking 2 each per every 10 units purchased</i>	EL-0035-L00-00	Yes	
2.3	12-6900	Thermostat and Overload Metal Cover <i>Recommend stocking 2 each per every 10 units purchased</i>	ST-8290	Yes	
3	12-1500	Solenoid Valve 500 mm <i>Recommend stocking 2 each per every 10 units purchased</i>	PU-4016	Yes	
4	CU-0001	Solenoid Cushion <i>Recommend stocking 2 each per every 10 units purchased</i>	CU-0001	Yes	



5	10-2500	Black O-Ring for Quartz Sleeve <i>Recommend stocking 1 each per every 10 units purchased</i>	CT-2006	Yes	
6	14-1051	Quartz Sleeve for 4W Lamp <i>Recommend stocking 1 each per every 10 units purchased</i>	CT-2026	Yes	
7	EN-0068-L00-00	UV Lamp Ballast 120V 60Hz 4W	EN-0068-L00-00	Yes	
8	10-3048	Faucet Nipple – Blue with Screen <i>Recommend stocking 2 each per every 10 units purchased</i>	PL-1013	Yes	
8.1	10-2600	Natural Faucet O-Ring – Silicon White <i>Recommend stocking 2 each per every 10 units purchased</i>	CT-2007	Yes	
9	12-8056	Silicon Button Key Mat <i>Recommend stocking 5 each per every 10 units purchased</i>	PL-1153	Yes	
10	12-8057	Button Label <i>Recommend stocking 2 each per every 10 units purchased</i>	LP-7084	Yes	
11	12-8150	Drip Tray Grill – Charcoal <i>Recommend stocking 4 each per every 10 units purchased</i>	PL-1152	Yes	
12	12-8055	Drip Tray - Charcoal with Waterlogic Logo <i>Recommend stocking 4 each per every 10 units purchased</i>	PL-1156	Yes	
Not Shown	01-2076	ScaleKleen <i>Recommend stocking 2 each per every 10 units purchased</i>	NA	Yes	
Remaining Parts					
13	Purchase from John Guest	JG Reducing Elbow Connector 5/16" * 1/4" (P1211008S)	PU-4007	No	
14	Purchase from John Guest	JG Equal Tee Connector 1/4" (P10208S)	PU-4011	No	

15	12-8510	UV 3-minute Timer PCB Hot and Cold	AK-0008-A	Yes	
16	EN-6059-A	PCB Stand-off Pin (one side)	NA	No	
17	10-3017	PCB Stand-off Pin	EN-6059	Yes	
18	NA	UV 3-minute Timer PCB Fixing Bracket	ST-8287	No	
19	PL-0235-L00-00	4W UV Fixing Rubber <i>Included in CT-2030-100-00 4 W Lamp Assembly</i>	PL-0235-L00-00	Yes	
20	12-1210	UV Lamp Retaining Threaded Nut	PL-1128	Yes	
21	12-3117	Power Transformer 120V	EL-5003-A	Yes	
22	12-3165	Upper Shelf	ST-8150	Yes	
23	12-3110	2L UV Cold Tank Assembly	CT-2060	Yes	
24	12-8050	Front Upper Drip Tray Insert Panel – <i>when purchasing, also request Hot Water Caution Label LP-7169 / 12-0001 to adhere to front of this panel.</i>	PL-1146	Yes	
24.1	12-0001	Hot Water Caution Label – <i>adhere to Front Upper Drip Tray Insert Panel.</i>	LP-7169	Yes	

25	12-3160	PCB Cover	PL-1298	Yes	
26	12-3115	PCB for Leak Detection System Hot and Cold	EN-6085-A	Yes	
27	12-8051	Front Hatch Panel Charcoal with UV logo <i>Sold Separately: Button Label (P/N 12-8057) & Silicon Button Key Mat (P/N 12-8056)</i>	PL-1147-B	Yes	
28	Purchase from John Guest	JG Equal Elbow Connector 1/4" (PI0308S)	PU-4008	No	
29	12-3195	Leak System Inlet Solenoid Bracket	ST-8244	Yes	
30	12-3175	Filter Bracket	ST-8152	Yes	
31	12-3150	Unit Rubber Feet	PL-1251-CN	Yes	
32	12-3170	Bottom Tray	ST-8151	Yes	
33	12-3155	Leak Tray	PL-1294	Yes	
33.1	12-3180	Leak Containment Tray Clip (sensor 0.5mm)	ST-8207-CN	Yes	
33.2	NA	Leak Sensor Wire	EL-5076-KR	No	

Verify compressor in machine before ordering parts as the Compressor P/N CO-0020-L00-00 and 10-2200 (CO-0001A) and related parts are not interchangeable.

CO-0020-L00-00 Compressor

34A.1	CO-0020-L00-00	LG Compressor 120V R134A CSB035LJCM	CO-0020-L00-00	Yes	
34A.2	CO-0019-L00-00	Compressor Capacitor	CO-0019-L00-00	Yes	
34A.3	ST-0216-L00-00	Capacitor Bracket	ST-0216-L00-00	Yes	
34A.4	CO-0017-L00-00	PTC Relay	CO-0017-L00-00	Yes	
34A.5	CO-0018-L00-00	Overload Protector	CO-0018-L00-00	Yes	

CO-9001-A / 10-2200 Compressor

34B.1	10-2200	Compressor (R134a 1/8HP) 120V/60Hz	CO-9001-A	Yes	
34B.2	10-3003	Compressor Starter Relay	CO-9016	Yes	
34B.3	10-5018	Compressor Overload	CO-9015	Yes	
34.1	12-1001	Filter Dryer	CO-9008	Yes	
35	10-3067	Bulkhead Union 1/4" x 1/4" John Guest P/N PI1208S	PU-4028	Yes	
36	12-8062	Side Panel	ST-8245	Yes	
37	12-3100	Wire Condenser	CO-9031	Special Order	

38	12-1101	Cold Tank Thermostat	CT-2016	Yes	
38.1	LP-0326	Cold Thermostat Cover Label	LP-0326-L00-00	Yes	
39	10-4013	Power Line Noise Filter, ElectroMagnetic Interference filter (EMI)	EL-5016	Yes	
40	10-3014	Fuse Holder and Fuse 120V / 15A with One Wire	EL-5053	Yes	
40.1	10-3013	Fuse 120V / 15A	EL-5010	Yes	
41	10-3008	Red Compressor and Heater Switch	EL-5004	Yes	
42	12-8061	Silver Back Panel	ST-8216	Yes	
43	ST-0049-L00-00	Metal Cover (Under Top Cover)	ST-0049-L00-00	Yes	
44	12-8060	Flat Top Cover - Charcoal with Texture	PL-1249-CN	Yes	
45	Purchase from John Guest	JG LLD PE Tube - Blue O.D.1/4" John Guest P/N PE-08-BI-1000F-B	PU-4031	No	
46	Purchase from John Guest	JG 1/4" Stopper PI0808S (used with Bulkhead Union 1/4" x 1/4" John Guest P/N PI1208S)	PU-4086	No	
47	10-7040	Silicon Tube 5/16" for Hot Water	PU-4064	Yes	

48	10-3062	JG LLDPE Tube - Blue 8mm John Guest P/N PE-0806- 100M-B	PU-4014	Yes	
49	10-2700	Faucet Assembly	PL-1011	Yes	
Not Shown	10-3099	3" Filter Clip	PU-4024	Yes	
Not Shown	10-3098	2" Filter Clip for In-Line Filter	PU-4025	Yes	
Not Shown	10-3007	Power Cord 120V – 1840 mm	EL-5001-B	Yes	