

TOUCHLESS MODULE INSTALLATION

Both the **HCA** and **HCS** models of the **WL15** are compatible with an optional **Touchless Module**. This infrared module can be installed for touchless operation of the machine. The following describes how to install the **Touchless Module**. Shown below are the components included in the **Touchless Module Kit**. The Touchless Module comes with a cable already connected to it, and another cable for connecting to the front panel is in the box as well.



Begin by removing the top lid of the machine. Locate the two screws at the back of the top panel, remove, and then slide the panel off the machine.



Next, remove the two screws holding the front panel to the frame.



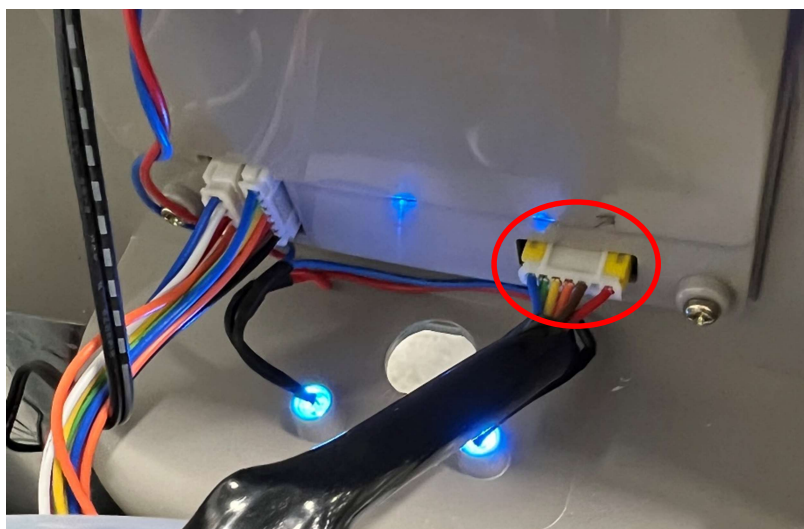
Then remove the decorative ring (unscrews counterclockwise) from the faucet from the outside of the machine and push the faucet up and out of the panel.



Take the panel removed previously and mark a hole to be drilled out in the desired location of the Touchless Module. The Module will stick to the top lid, covering the hole. Drill a 3/4-1" hole in the marked location.



Next, lean the front panel forward and connect the white connector of the 2-point cable to the yellow port on the front panel. Reinstall the faucet and the silver decorative ring, push the front panel back into position and reinstall the screws in the rear top corners.



Pass the other end of the 2-point cable through the hole of the lid and reinstall the lid. Connect the black connector of the 2-point cable to the connector of the Touchless Module wire. At this point, push any excess wire back through the hole.



Remove the adhesive backing on the underside of the Touchless Module and firmly press the module down over the hole with the wires tucked inside.

