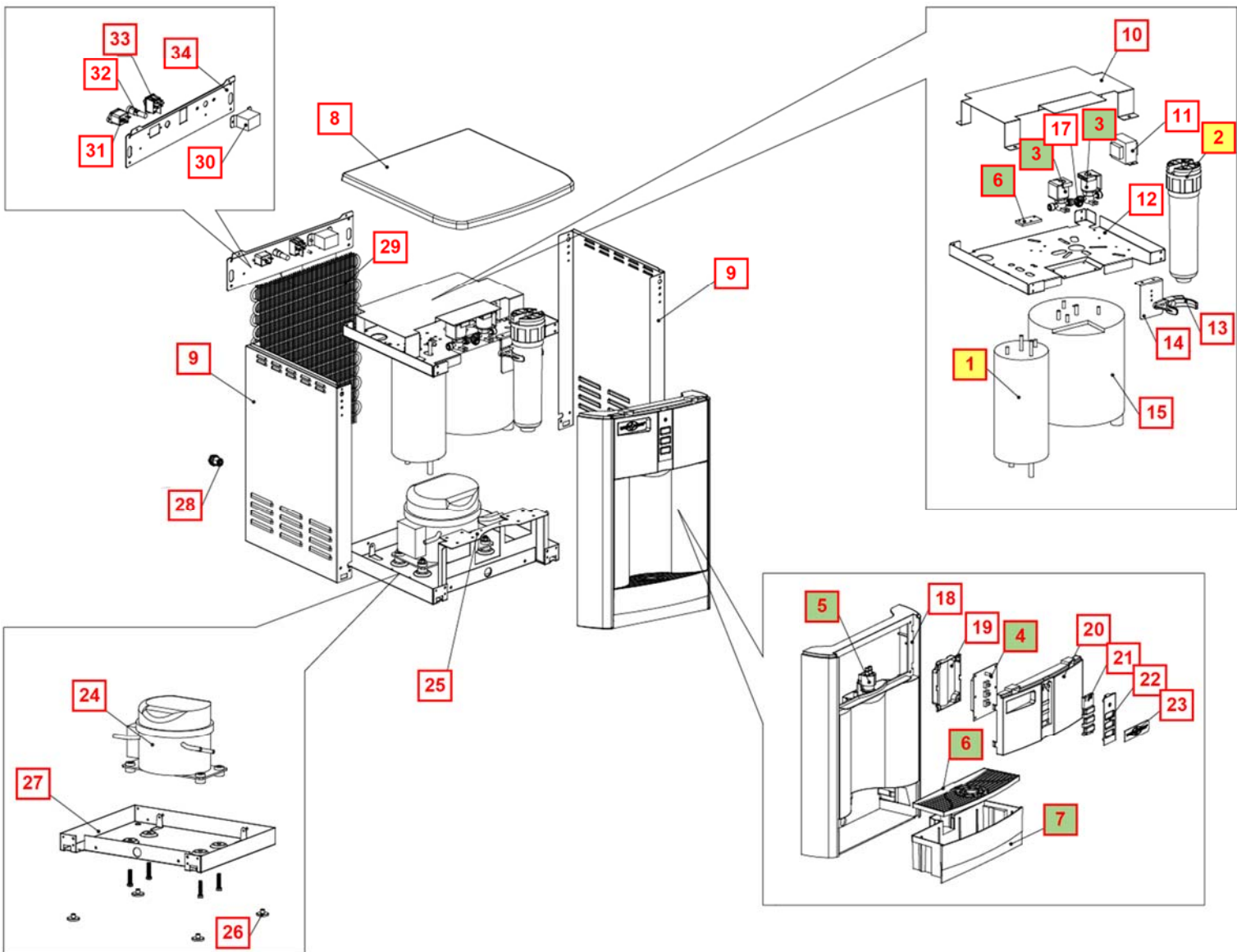
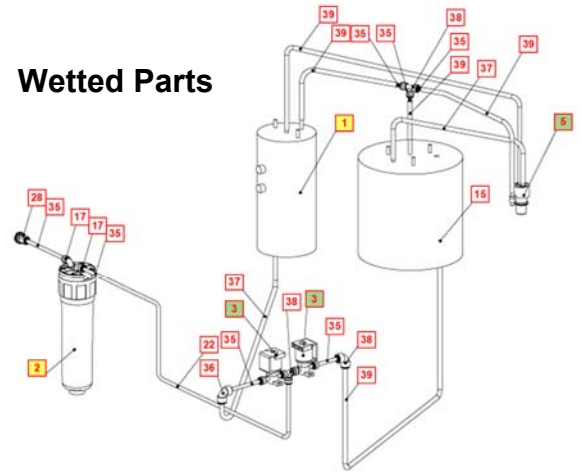


WL100 COUNTER TOP DRAWINGS AND PARTS LIST

Yellow = Consumables

Green = Recommended spare parts

Wetted Parts









| No | WLCP Part No. | Description | Part No | Stocked? | |
|--------------------------------|---------------|---|----------------|----------|---|
| Consumables | | | | | |
| 1 | 12-5615 | Hot Tank 1.6 Liter 100V / 500W Factory Set Point 85°C (185°F) | HT-3041 | Yes |  |
| 2.1 | FT-0035 | GAC Filter - 10" Carbon Activated Inline Filter Assembly - Optional GAC Replacement Filter Element PN: FT-0038-WLT | FT-0035-IL-WLT | Yes |  |
| 2.2 | FT-0053 | 10" Sediment Filter Assembly - Optional Sediment Replacement Filter Element PN: FT-0055-WLT | FT-0053-IL-WLT | Yes |  |
| 2.3 | FT-0063 | 10" CBC Filter Assembly - (Cyst, Lead, Asbestos Reduction) - Optional CBC Replacement Filter Element PN: FT-0064-WLT | FT-0063-IL-WLT | Yes |  |
| Recommended Spare Parts | | | | | |
| 1.1 | 12-6900 | Thermostat and Overload Metal Cover <i>Recommend stocking 2 each for every 10 units purchased</i> | ST-8290 | Yes |  |
| 1.2 | EL-0159 | Overload with Manual Reset - 97°C (207°F) <i>Recommend stocking 2 each for every 10 units purchased</i> | EL-0159-L00-00 | Yes |  |
| 1.3 | 12-1303 | Hot Tank Thermostat - 85°C (185°F) <i>Recommend stocking 2 each for every 10 units purchased</i> | HT-3013A | Yes |  |
| 3 | 12-5665 | Solenoid Valve with Terminal at Outlet Position <i>Recommend stocking 5 each for every 10 units purchased</i> | PU-4164-L00-00 | Yes |  |
| 3.1 | CU-0001 | Solenoid Cushion <i>Recommend stocking 5 each for every 10 units purchased</i> | CU-0001 | Yes |  |
| 4 | 20-0040 | Display PCB <i>Recommend stocking 2 each for every 10 units purchased</i> | EN-6130 | Yes |  |
| 5 | 10-2700 | Faucet Assembly <i>Recommend stocking 2 each for every 10 units purchased</i> | PL-1011 | Yes |  |

| | | | | | |
|---------------------------|---------|--|----------------|-----|---|
| 5.1 | 10-2600 | Natural Faucet O-Ring – Silicon White <i>Recommend stocking 2 each for every 10 units purchased</i> | CT-2007 | Yes |  |
| 5.2 | 10-3048 | Faucet Nipple – Blue with Screen <i>Recommend stocking 2 each for every 10 units purchased</i> | PL-1013 | Yes |  |
| 6 | 20-1040 | Drip Tray Grill Charcoal <i>Recommend stocking 5 each for every 10 units purchased</i> | PL-1362-L00-CL | Yes |  |
| | 20-0065 | Drip Tray Grill – Blue <i>Recommend stocking 5 each for every 10 units purchased</i> | PL-1362 | Yes |  |
| 7 | 20-1035 | Drip Tray Body – Charcoal No Logo <i>Recommend stocking 5 each for every 10 units purchased</i> | PL-1361-L00-CL | Yes |  |
| | 20-0070 | Drip Tray Body – Blue No Logo <i>Recommend stocking 5 each for every 10 units purchased</i> | PL-1361 | Yes |  |
| Remainder of Parts | | | | | |
| 8 | 20-1045 | Top Cover Flat - Charcoal Textured | PL-1366-L00-CL | Yes |  |
| | 20-0005 | Top Cover Flat – Blue | PL-1366 | Yes |  |
| 9 | 12-5675 | Side Panel – Counter Top only | ST-8148-A | Yes |  |
| 10 | 12-6900 | High Voltage Cover Counter Top Only | ST-8301 | Yes |  |
| 11 | 12-1200 | Power Transformer 120V / 60Hz | EL-5021 | Yes |  |
| 12 | 12-3165 | Upper Shelf Counter Top Only | ST-8150-B | Yes |  |

| | | | | | |
|------|---------|--|--------------------|--------------------------|---|
| 13 | 20-1010 | 2.8" Filter Clip for In-Line Filter | PU-4161 | Q |  |
| 14 | 20-1015 | Filter Bracket Counter Top Only | ST-8326 | Yes |  |
| 15 | NA | 2 Liter Cold Tank Countertop Only | CT-2087-A | Special Order |  |
| 16 | 20-0075 | Energy Saver PCB | EN-6131 | Yes |  |
| 16.1 | 20-1005 | Jumper Pin | EN-6082 | Yes |  |
| 17 | NA | 1/4" Union Elbow John Guest P/N P10308S | PU-4008 | Purchase from John Guest |  |
| 18 | 20-0030 | Front Upper Drip Tray Insert Panel - when purchasing, also request Hot Water Caution Label LP-7169 / 12-0001 to adhere to front of this Panel. | PL-1365 | Yes |  |
| 18.1 | 12-0001 | Hot Water Caution Label – Adhere to Front Upper Drip Tray Insert Panel. | LP-7169 | Yes |  |
| 19 | 20-0035 | Front PCB Cover | PL-1369 | Yes |  |
| 20 | 20-1050 | Front Upper Insert Panel - Charcoal | PL-1367-L00-CL-BIO | Yes |  |
| | 20-0045 | Front upper Insert Panel – Blue | PL-1367 | Yes |  |
| 21 | 20-0050 | Silicon Button Keymat | PL-1370 | Yes |  |

| | | | | | |
|------|---------|--|----------------|---------------|---|
| 22 | 20-0055 | Button PCB Insert Panel - Silver | PL-1368 | Yes |  |
| 23 | 20-1030 | WL100 Label – Front Upper Insert Panel - Charcoal | LP-0269-L00-00 | Yes |  |
| | 20-0060 | WL100 Label – Front Upper Insert Panel – Blue | LP-7292 | Yes |  |
| 24 | NA | Compressor 120V / 60Hz | CO-9045 | Special Order |  |
| 24.1 | 12-1001 | Filter Dryer | CO-9008 | Yes |  |
| 24.2 | 10-3003 | Compressor Starter Relay | CO-9016 | Yes |  |
| 24.3 | 10-5018 | Compressor Overload | CO-9015 | Yes |  |
| 25 | 12-3175 | Filter Bracket Counter Top Only | ST-8152-B | Yes |  |
| 26 | 12-3150 | Unit Rubber Feet – Counter Top Only | PL-1251-CN | Yes |  |
| 27 | 12-3170 | Bottom Panel Counter Top Only | ST-8151-A | Yes |  |
| 28 | 10-3067 | Bulkhead Union ¼" x ¼" John Guest P/N PI1208S | PU-4028 | Yes |  |
| 29 | 12-3100 | Wire Condenser Counter Top Only | CO-9031 | Special Order |  |
| 30 | 19-1069 | Cold Tank Thermostat | CT-2070-A | Yes |  |
| 30.1 | LP-0326 | Cold Adjustment Cover Label | LP-0326-L00-00 | Yes |  |

| | | | | | |
|-----------|---------|---|----------------|-----------------------------|--|
| 31 | 19-1090 | Socket for Plug Connection | EL-0061-L00-00 | Yes |  |
| 31.1 | 19-1015 | Gasket for Power Socket | ST-8052 | Yes |  |
| 32 | 10-3014 | Fuse Holder and Fuse 120V / 15A with One Wire | EL-5053 | Yes |  |
| 32.1 | 10-3013 | Fuse 120V / 15A | EL-5010 | Yes |  |
| 33 | 12-5600 | Red Heater and Compressor Switch | EL-5019-A | Yes |  |
| 34 | 12-5674 | Back Panel – Silver Countertop Only | ST-8253 | No |  |
| 35 | NA | JG LLD PE Tube - Blue O.D.1/4" John Guest P/N PE-08-BI-1000F-B | PU-4031 | Purchase from John Guest |  |
| 36 | NA | 5/16" X 1/4" Reducing Elbow John Guest P/N PI211008S | PU-4007 | Purchase from John Guest |  |
| 37 | 10-3062 | JG LLDPE Tube - Blue 8mm John Guest P/N PE-0806-100M-B | PU-4014-A | Yes |  |
| 36 | NA | 1/4" Union Tee John Guest P/N P10208S | PU-4011-A | Purchase from John Guest |  |
| 39 | 10-7040 | Silicon Tube 5/16" for Hot Water | PU-4064 | Yes |  |
| Not Shown | 10-3007 | Power Cord – 120V / 60Hz | EL-5001-B | Yes |  |