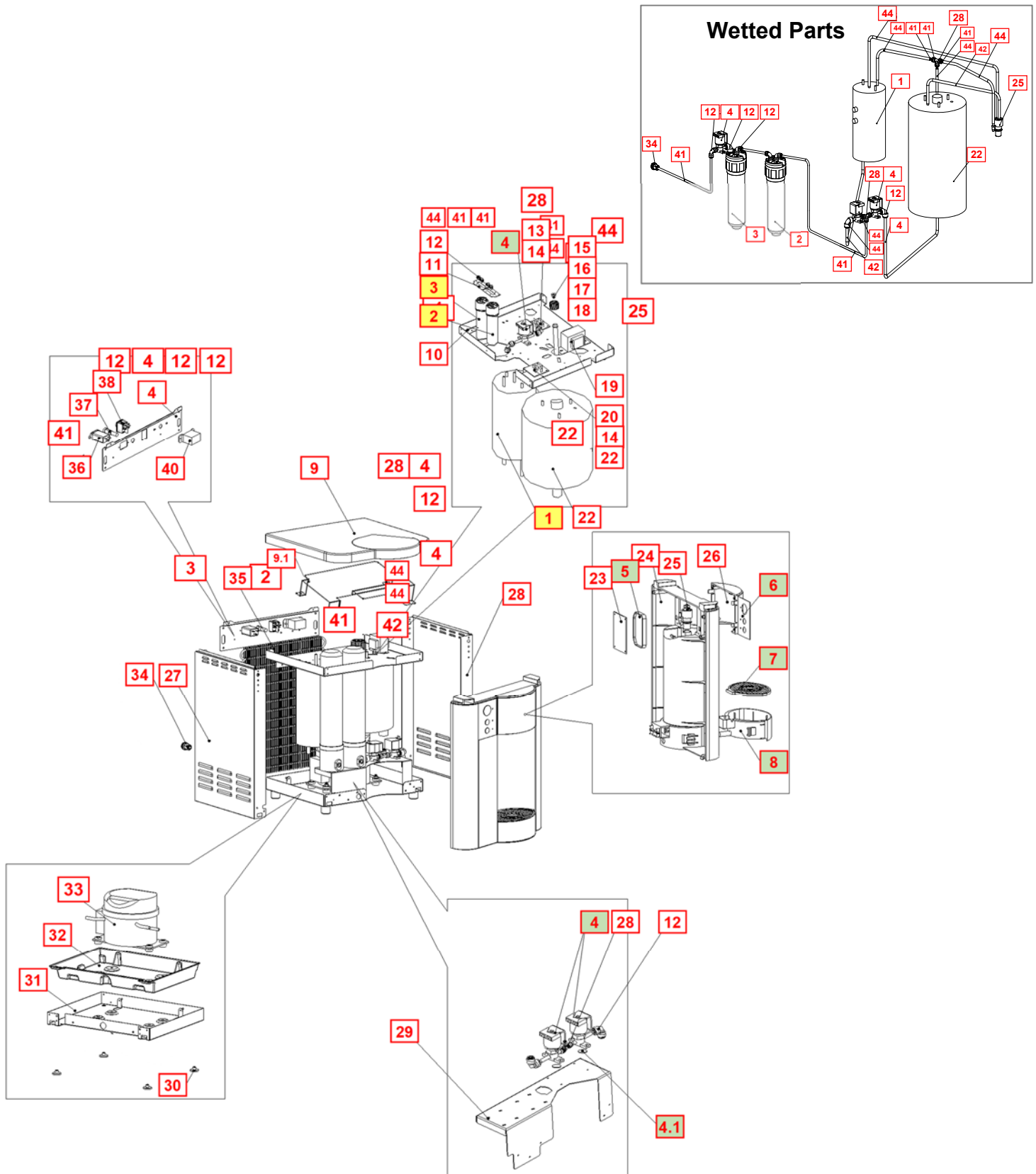


## infiniti COUNTER TOP PARTS DRAWING AND PARTS LIST





No	WLUSA Part Number	Description	Factory Part Number	Part
<b>Consumables</b>				
1	10-4029	Hot Tank 120V/500W - 1.6L with Thermistor	HT-3024	
2	FT-0063	Carbon Block - 10" CBC 1-Micron Lead and Cyst Reduction Inline Filter <i>Filter Element PN FT-0038-WLT</i>	FT-0063-IL-WLT	
3	FT-0035	GAC Filter - 10" Carbon Activated Inline Filter <i>Filter Element PN FT-0064-WLT</i>	FT-0035-IL-WLT	
<b>Recommended Spare Parts</b>				
1.1	12-6900	Thermostat and Overload Metal Cover <i>Recommend stocking 2 each per every 10 units purchased</i>	EL-0159-L00-00	
4	PU-4017	Solenoid Valve DC24V 500mm <i>Recommend stocking 2 each per every 10 units purchased</i>	PU-4017	
4.1	CU-0001	Solenoid Cushion <i>Recommend stocking 2 each per every 10 units purchased</i>	CU-0001	
5	NA	Dispensing Silicon Buttons <i>Recommend stocking 2 each per every 10 units purchased</i>	PL-0109-L00-00	
6	NA	Display Button Label <i>Recommend stocking 2 each per every 10 units purchased</i>	LP-7087	
7	11-2070	Drip Tray Grill – Silver <i>Recommend stocking 2 each per every 10 units purchased</i>	PL-1163-L00-SI	
8	11-2073	Drip Tray - Silver - No Logo <i>Recommend stocking 2 each per every 10 units purchased</i>	PL-1162-L00-SI	
9	NA	Top Cover – Charcoal <i>Recommend stocking 2 each per every 10 units purchased</i>	PL-0107-L00-CS	
9.1	ST-0049-L00-00	High Voltage Metal Cover (ETL Certification) – Under Top Cover <i>Recommend stocking 2 each per every 10 units purchased</i>	ST-0049-L00-00	

Remaining Parts				
1.2	10-3030	Hot Tank Thermistor	HT-3002	
1.3	12-1360	Overload with Manual reset - 221°F (105°C)	HT-3012	
10	NA	Upper Shelf	ST-8234	
11	NA	Inline Filter Bracket	ST-0088-L00-WH	
12	PU-4008	JG Equal Elbow Connector 1/4" (PI0308S)	Purchase from John Guest	
13	NA	Relay PCB	EN-0010-L00-00	
14	10-3017	Plastic PCB Support	EN-6059	
15	NA	4W UV Fixing Rubber	PL-0235-L00-00	
16	12-1210	UV Lamp Retaining Threaded Nut	PL-1128	
17	10-2500	Black O-Ring for Quartz Sleeve	CT-2006	
18	CT-2062-CN	Quartz Sleeve (100mm)	CT-2062CN	
19	12-3117	Power Transformer	EL-5003-A	
20	12-8150	3 Minute UV Timer PCB	AK-0008-A	
21	NA	Plastic PCB Support (one side)	EN-6059-A	
22	12-3110	Cold Tank – 2L	CT-2060	
23	EN-0033-L00-00	Display PCB	EN-0033-L00-00	




24	11-2085	Drip Tray Insert Panel	PL-1157	
25	10-2700	Faucet Assembly – Cold and Hot	PL-1011	
25.1	10-3048	Faucet Nipple – Blue with Screen	PL-1013	
26	NA	Silver Insert Hatch Panel	PL-0127-L00-00-INF	
27	NA	Side Panel – Charcoal	ST-8236	
28	Purchase from John Guest	Equal Tee Connector ¼" (John Guest PN P10208S)	PU-4011	
29	NA	Filter Bracket	ST-8239	
30	12-3150	Unit Rubber Feet	PL-1251-CN	
31	NA	Bottom Shelf	ST-8235	
32	NA	Leak Tray	PL-0116-L00-00	

**Verify compressor in machine before ordering parts as the Compressor P/N CO-0020-L00-00 and 10-2200 (CO-0001A) and related parts are not interchangeable.**

**CO-0020-L00-00 LG Compressor**

33A.1	CO-0020-L00-00	LG Compressor 120V R134A CSB035LJCM	CO-0020-L00-00	
33A.2	CO-0019-L00-00	Compressor Capacitor	CO-0019-L00-00	
33A.3	ST-0216-L00-00	Capacitor Bracket	ST-0216-L00-00	
33A.4	CO-0017-L00-00	PTC Relay	CO-0017-L00-00	
33A.5	CO-0018-L00-00	Overload Protector	CO-0018-L00-00	

CO-9001-A / 10-2200 Compressor				
33B.1	10-2200	Compressor (R134a 1/8HP) 120V/60Hz	CO-9001-A	
33B.2	10-3003	Compressor Starter Relay	CO-9016	
33B.3	10-5018	Compressor Overload	CO-9015	
34	10-3067	Bulkhead Union ¼" x ¼" John Guest P/N PI1208S	PU-4028	
35	12-3100	Wire Condenser	CO-9031	
36	10-4013	Power Line Noise Filter, ElectroMagnetic Interference Filter (EMI)	EL-5016	
37	10-3014	Fuse Holder and Fuse (120V / 15A) with One Wire	EL-5053	
37.1	10-3013	Fuse 120V / 15A	EL-5010	
38	10-3008	Red Power – Heater Switch	EL-5004	
39	NA	Back Panel	ST-8238	
40	12-1101	Cold Water Thermostat	CT-2016	
40.1	LP-0326	Cold Thermostat Cover Label	LP-0326-L00-00	
41	Purchase from John Guest	LPDE Blue Tube ¼" (John Guest PN PE-08-BI-1000F-B)	PU-4031	

42	10-3062	LPDE Blue Tube 8mm (5/16") (John Guest PN PE-0806-100M-B)	PU-4014	
43	Purchase from John Guest	Reducing Elbow 5/16" to 1/4" elbow Connector (John Guest PN PI211008S)	PU-4007	
44	10-7040	Silicon Tube for Hot Water 5/16"	PU-4064-L00-00	
Not Shown	10-3007	Power Cord 120V – 18240mm	EL-5001-B	