




S4 PARTS LIST

No.	Part No.	Description	Rec' Stock	Photo
1	31-0490-2	BASE PLATE FOOT	0	
2	11-1546-1	LEAK STOP FLOAT VALVE	2	
3	41-2048-0	POWER CORD PLUG	0	
4	41-2180-0	BOOSTER PUMP	1-2	
5	41-2092-0	FAN MOTOR	0	
6	41-2055-0	HOT TANK POWER SWITCH	1	
7	11-3264-0	SHUT-OFF FLOAT	1	
8	41-1201-1	TEMPERATURE SENSOR – COLD TANK	1-2	

9	41-1678-1	AGITATOR MOTOR	2-3	
10	11-3034-1	MIXER	2-3	
11	41-1194-2	HIGH PRESSURE SOL V/V	2-3	
12	41-1449-2	SPARKLING SOL V/V	2-3	
13	41-1768-4	HOT WATER SOL V/V	2-3	
14	41-1448-1	PRESSURE SWITCH 2K (WHT COLLET)	1	
15	41-2198-0	PRESSURE SWITCH 6.5K (RED COLLET)	1	
16	41-2274-0	PRESSURE SWITCH WIRE	0	

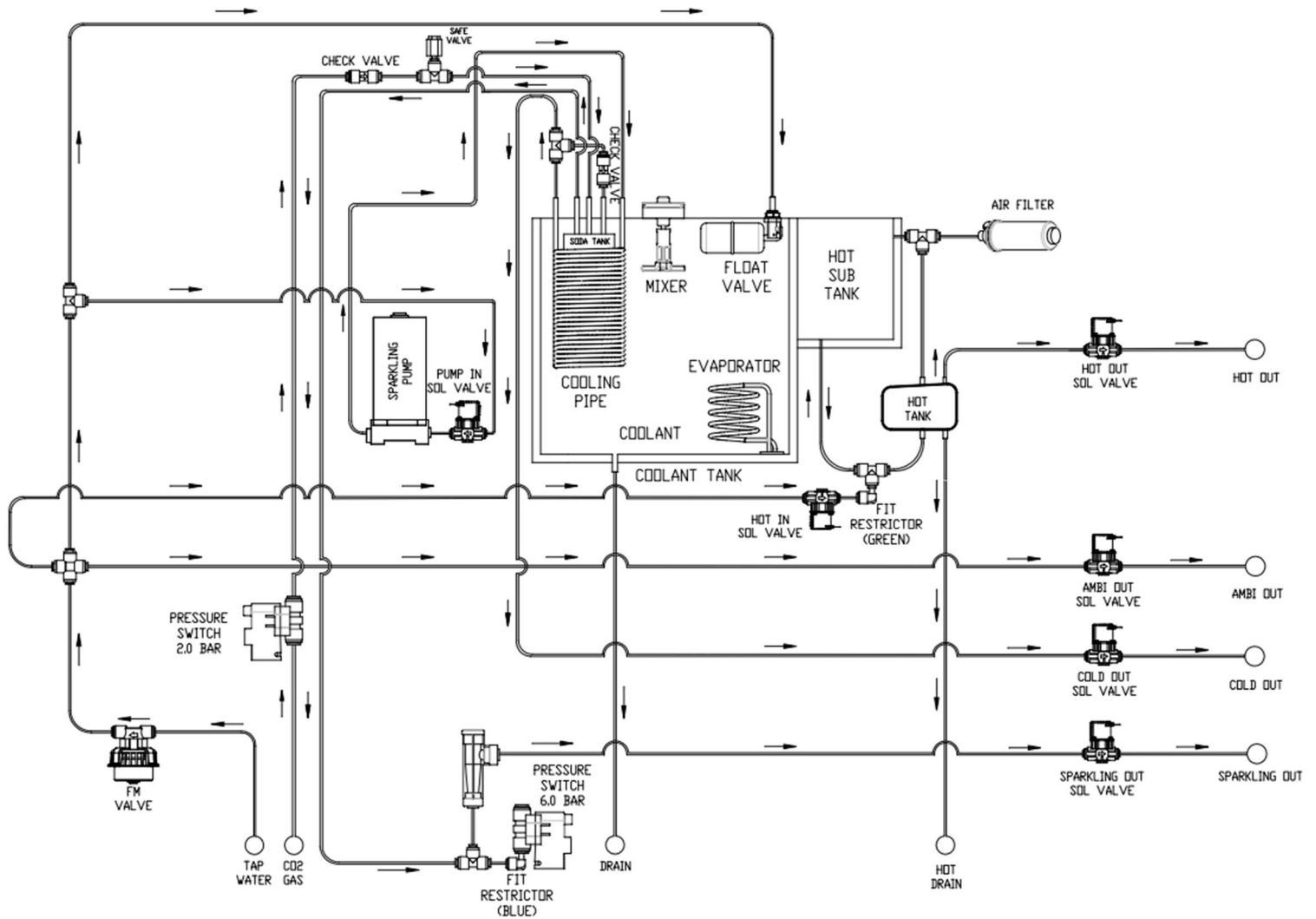
17	41-1432-2	WATER LEVEL SENSOR (2 PIN)	1-2	
18	91-4119-0	HOT TANK ASSY	0-1	
19	11-1088-0	¼" RESTRICTOR FITTING	1-2	
20	91-4247-0	MANIFOLD FAUCET ASSY	0-1	
21	51-0347-1	6" SEDIMENT AIR FILTER	Change every 24mo	
22	11-3268-0	¼" SPARKLING FLOW CONTROL	1-2	
23	11-0978-3	¼" RESTRICTOR FITTING	1-2	
24	11-2044-0	¼" CHECK VALVE	0-2	

25	41-2268-0	MAIN PCB	1	
26	21-0627-0	GAS SAFETY VALVE	0	
27	91-4111-0	FRONT COVER ASSEMBLY	0	
28	41-2269-0	FUNCTION PCB	1	
29	41-2271-0	LOGO PCB	0-1	
30	41-2145-0	IR SENSOR	2	
31	91-4288-0	DECO FAUCET COVER ASSY	0	
32	91-3646-0	DECO FAUCET ASSY	0	

33	11-3271-0	SIDE COVER	0	
34	11-3272-0	TOP COVER	0	
35	91-4112-0	DRIP TRAY ASSEMBLY	0	

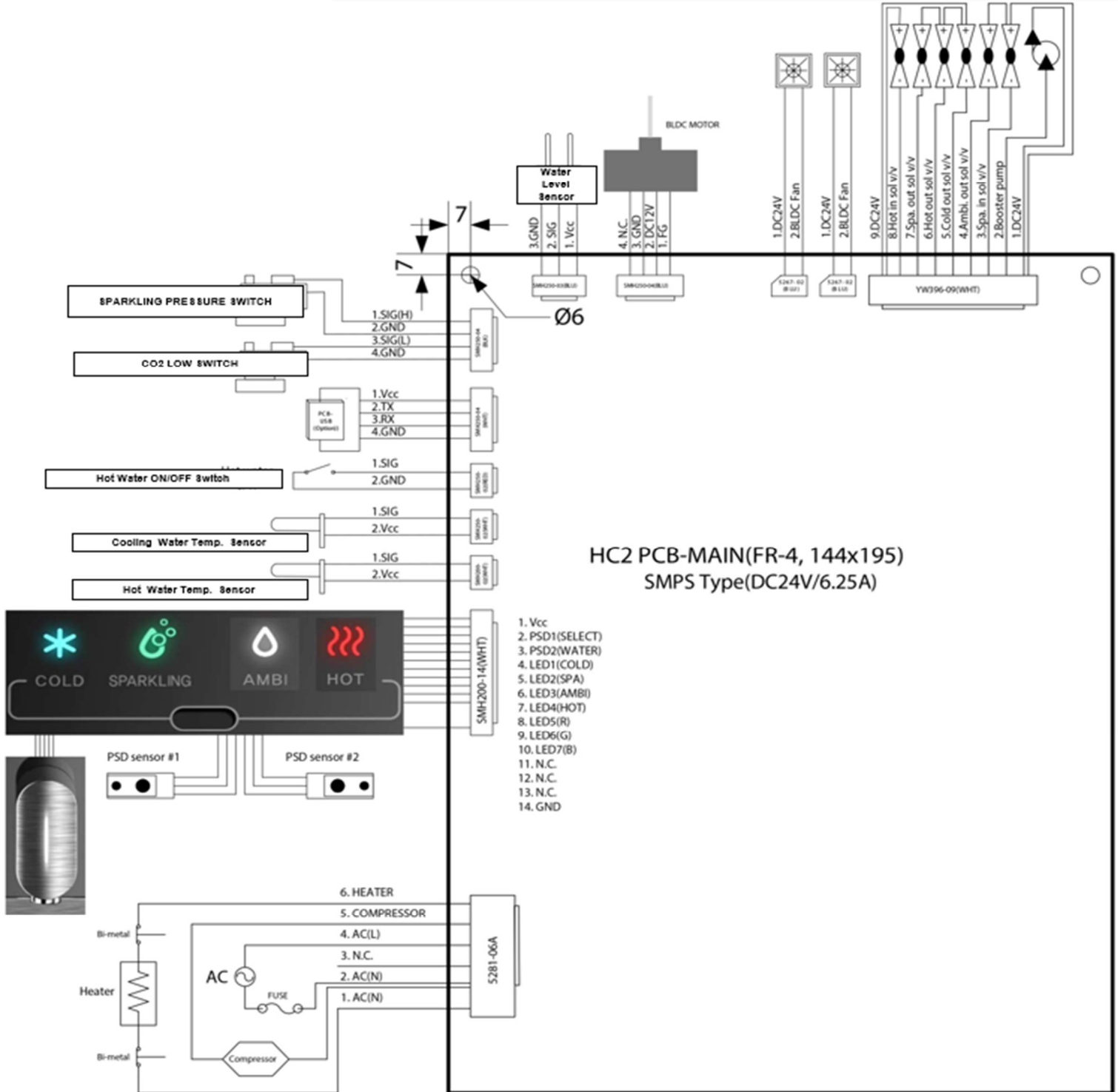
S4 WATER FLOW DIAGRAM

< SPARKLING WATER FLOW >

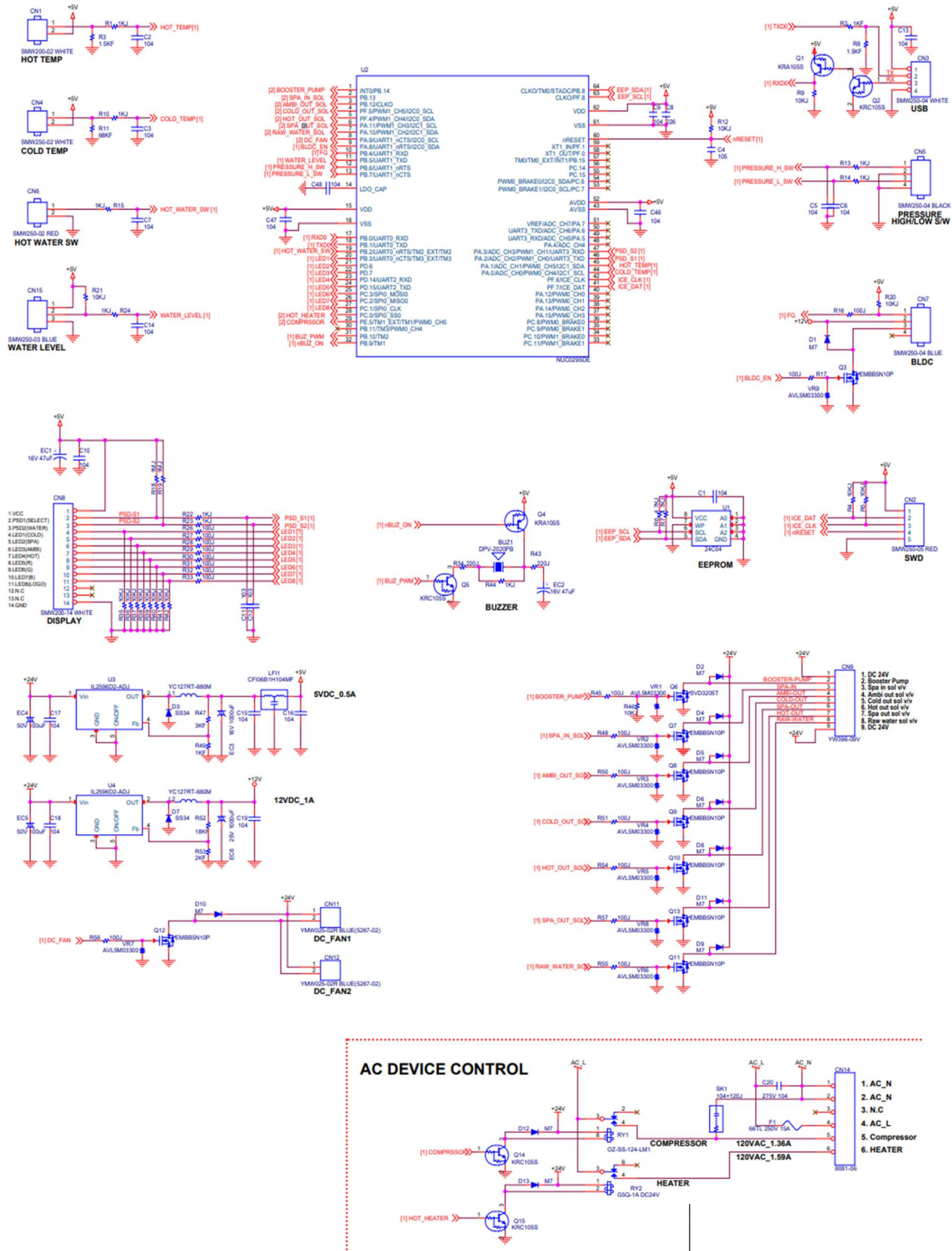


S4 PCB DIAGRAM

⚠ DANGER! HIGH VOLTAGE ELECTRICAL HAZARD. PCB (Printed Circuit Board) contains High Voltage. Only trained and qualified technicians should attempt live testing.



S4 ELECTRICAL DIAGRAM





PRE-INSTALLATION



DANGER! ELECTRICAL SHOCK HAZARD.

*Only qualified personnel who have read and understand this entire manual should attempt to install, or service this **S4 Water Treatment System**, failure to do so could result in death or serious injury. DO NOT plug into an electrical supply until specifically instructed.*



WARNING! ALWAYS SANITIZE BEFORE USE.

Sanitize before use to eliminate any potential microbiological contaminants.

Materials Needed:

- Personal Protective Equipment. Rubber or Nitrile Safety Gloves and Protective Eyewear
 - Phillips Screwdriver
 - Temperature Gauge
 - Water Pitcher or Container to collect water from the faucet
 - 5-gallon container or drain basin
 - Sanitizer - Household Bleach (5.25% Sodium Hypochlorite) or Citric Acid Based Cleaner
 - ¼" Plastic Tubing, at least 10 feet in length, and assorted ¼" quick connect fittings
 - TDS Meter and Test Strips for measuring chlorine – Optional
1. Unpack the **Wellsys S4 Water Treatment System** and check exterior for damage.



CAUTION! FILTER FLUSH REQUIRED.

S4's Water Treatment Systems are not supplied with filters. Filters should be configured to optimize your system. Filters need to be configured and specified to do the job given the local water conditions, usage, maintenance schedule, and placement restrictions.

In order for our filters to perform as represented and to provide the best quality water possible, it is essential that filters be replaced periodically. The frequency of filter changes depends upon your water quality and your water usage. For example, if there is a lot of sediment and/or particles in your water, then you will have to change your filters more frequently than a location with little to no sediment. Be sure to replace your filters whenever you notice a decline in the performance, whether it is a drop in flow rate and/or pressure or an unusual taste in the water.

2. Flush thoroughly per filter manufacturers' recommendation with fresh water to drain. More details provided in the **Filter Flushing** section further down.
 3. Once flushed, install the filters. Following the flow direction on the filter.
- NOTE:** Filters should not be flushed prior to 24 hours before installation to limit Microbial Growth.